

BLITZ GLASS

Hardware Posts



www.blitzglass.com.au



(07) 5493 9779



admin@blitzglass.com.au



AUSTRALIS

50MM ALUMINIUM MODULAR SYSTEM

A complete pool fencing system which offers easy installation with a visually stunning end product that your clients will swoon over.

Posts extruded in Alloy Grade 6106 T6

Alloy 6106 has excellent corrosion resistance and is renowned for its superior rigidity. 1 way & 2 way profiles feature 3.7mm thick walls for superior strength

Aluminium extrusions produced in accordance with AS/NZS 1866:1977

Extrusions produced to the chemical composition, mechanical property and dimensional tolerances in AS/NZS 1866:1977.

The glazing pockets are deep, allowing for flexibility of installation

For example, the 1 way post glazing pocket is 28mm deep.

Captive wedge glazing system incorporated

Allows for increased speed of installation by requiring only the inner glass face to be manually glazed.

Screw flutes in glazing posts

Screw flutes strategically incorporated into the glazing post enable a range of installation advantages such as being able to screw fix a handrail, screw-fix base plates for pool fencing installation & enable top caps to be pressed securely in place to name a few key advantages. The Australis system with screw flutes minimises need for welding. Pre-welded base plated posts are available for fast assembly.

Standards Compliance for Pool Fencing and Balustrade

We have undertaken engineering review to ensure compliance to load considerations are satisfied.

Genuine Interpon Powder used

Genuine Interpon powder is used with Interpon manufacturer warranties provided.

ISO 9001 accredited industry leading extrusion manufacturing factory

These are guidelines that provide a comprehensive model for quality management systems with the objective to consistently produce top quality products.

Interpon gold accredited Australian powder coat line

Powder coat colours



Satin Black
GN150A



Monument Matt
GL229A



Pearl White Gloss
GA078A

* Mill finish also available





EXTRUSION RANGE

DELUXE ONE WAY

DELUXE TWO WAY

90 DEGREE

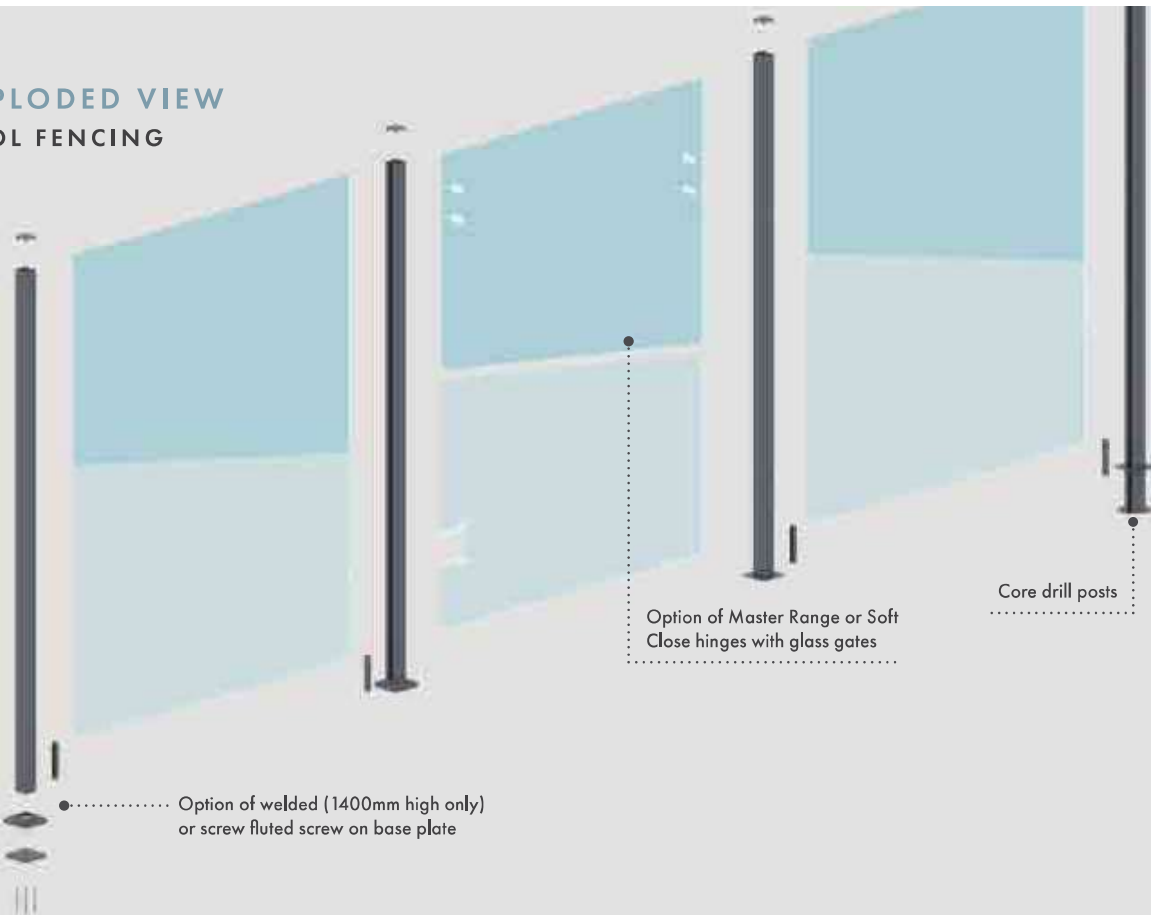
135 DEGREE

HALF POST

FULL POST



EXPLODED VIEW POOL FENCING

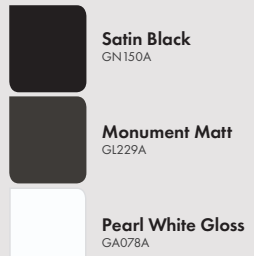


AUSTRALIS DELUXE RANGE

50MM ALUMINIUM POST SYSTEM

The Australis 50x50mm Aluminium System has been refreshed to now offer Monument and Pearl White powder coat as stocked finishes in to addition Satin Black. Importantly, the 1 Way & 2 Way profiles have increased wall thickness for better strength & rigidity. Deep glazing pockets provide for ease of installation coupled with captive wedge glazing whereby only one side of the glass panel requires a push in wedge rubber. The system may be used for balustrade or pool fencing application with 8, 10 or 12mm glass. Contact us for technical information and engineering information. A full range of matching accessories such as top caps, dress rings, domical covers, glazing rubbers and more is available.

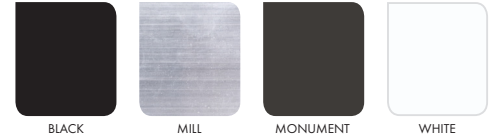
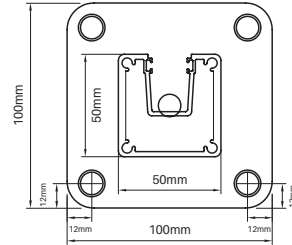
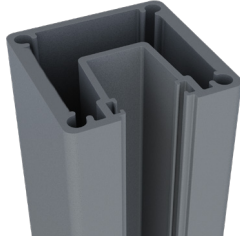
Powder coat colours



*Mill finish also available

1050MM BASE PLATED

- 10mm thick base plate welded to post
- Overall finished height of 1050mm ideal for balustrade application
- Alloy 6106 T6
- 1 Way & 2 Way : features 2 sides with 3.7mm wall thickness for increased strength

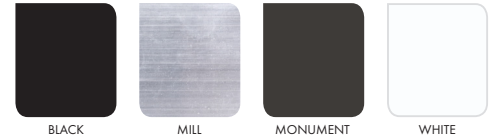
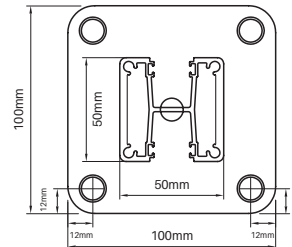


ONE WAY DELUXE POST

CODE: A50-1050D-1WBP-B
A50-1050D-1WBP-M
A50-1050D-1WBP-MN
A50-1050D-1WBP-W

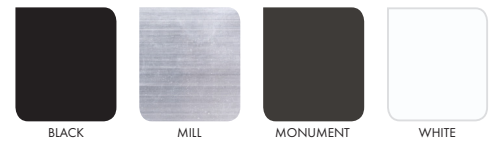
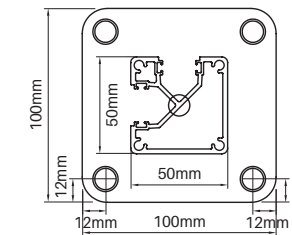
TWO WAY DELUXE POST

CODE: A50-1050D-2WBP-B
A50-1050D-2WBP-M
A50-1050D-2WBP-MN
A50-1050D-2WBP-W



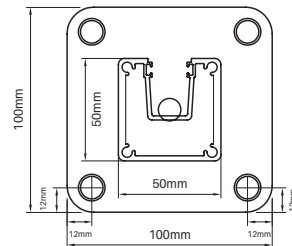
90 DEGREE POST

CODE: A50-1050-90BP-B
A50-1050-90BP-M
A50-1050-90BP-MN
A50-1050-90BP-W



1400MM BASE PLATED WELDED

- 10mm thick base plate welded to post
- Overall finished height of 1400mm suits pool fencing application or where longer balustrade base plated posts required
- Alloy 6106 T6
- 1 Way & 2 Way : features 2 sides with 3.7mm wall thickness for increased strength

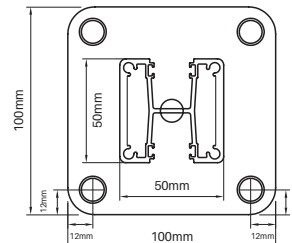


ONE WAY DELUXE POST

CODE: A50-1400D-1WBP-B
A50-1400D-1WBP-M
A50-1400D-1WBP-W

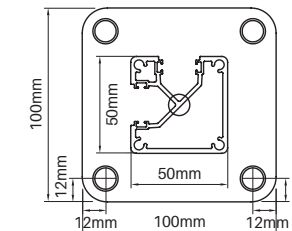
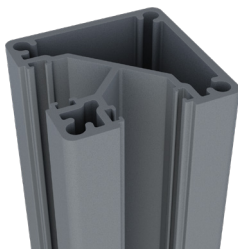
TWO WAY DELUXE POST

CODE: A50-1400D-2WBP-B
A50-1400D-2WBP-M
A50-1400D-2WBP-W



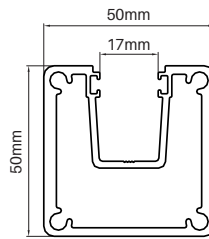
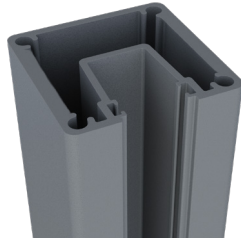
90 DEGREE POST

CODE: A50-1400-90BP-B
A50-1400-90BP-M
A50-1400-90BP-W



1400MM CORE DRILL

- 1400mm long post suits core drill application for pool fencing or balustrade
- Alloy 6106 T6
- 1 Way & 2 Way : features 2 sides with 3.7mm wall thickness for increased strength

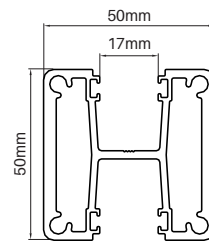


ONE WAY DELUXE POST

CODE: A50-1400D-1W-B
A50-1400D-1W-M
A50-1400D-1W-W

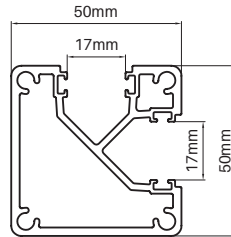
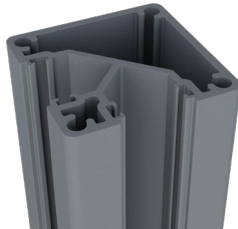
TWO WAY DELUXE POST

CODE: A50-1400D-2W-B
A50-1400D-2W-M
A50-1400D-2W-W



90 DEGREE POST

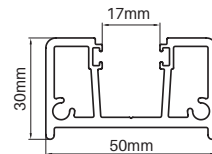
CODE: A50-1400-90-B
A50-1400-90-M
A50-1400-90-W



1400MM HALF POST

- 1400mm half post extrusion fixes to wall/existing structure
- Alloy 6005A T6

CODE: A50-1400-HALF-B
A50-1400-HALF-M
A50-1400-HALF-W

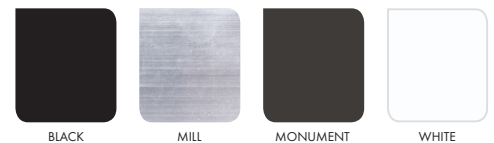
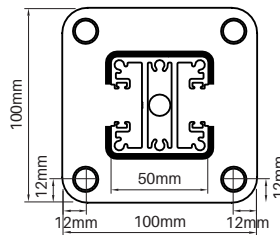
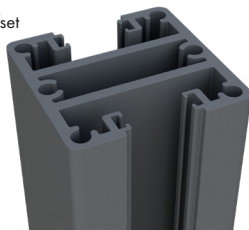


2000MM BASE PLATED WELDED

TWO WAY DOUBLE WEBBED DELUXE POST

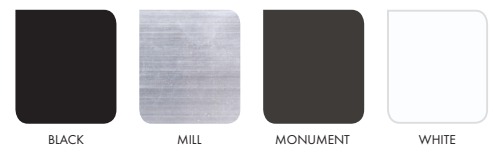
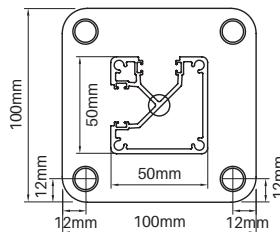
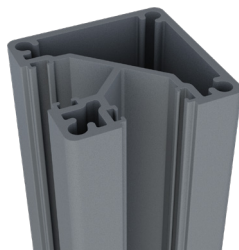
- 2000mm long posts with 10mm base plate welded
- Alloy 6106 T6
- Features 2 sides with 3.1mm wall thickness for increased strength
- 2 Way posts features double web profile for extra strength. Snap in infill on one side to make a 1 way post.
- Double web also provides a cavity for a non weld offset handrail bracket installation (contact us for more info)
- Base plate can be easily cut off if not required
- Longer posts suit installation with higher glass

CODE: A5050-2000D-2WBP-B
A5050-2000D-2WBP-M
A5050-2000D-2WBP-MN
A5050-2000D-2WBP-W



90 DEGREE POST

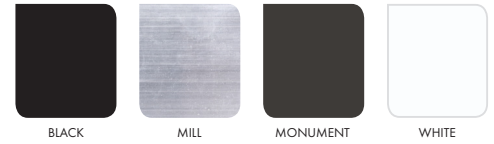
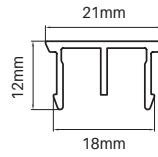
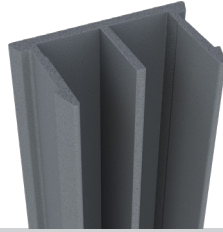
CODE: A50-2000-90BP-B
A50-2000-90BP-M
A50-2000-90BP-MN
A50-2000-90BP-W



1400MM INFILL

- Snap in infill suits all profiles
- Easily cut to required length to set start height of glass

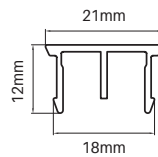
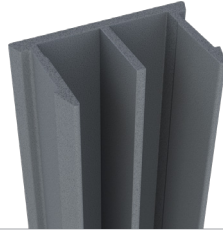
CODE: A50-1400-INF-B
A50-1400-INF-M
A50-1400-INF-MN
A50-1400-INF-W



2800MM INFILL

- Snap in infill suits all profiles
- Easily cut to required length to set start height of glass

CODE: A50-2800-INF-B
A50-2800-INF-M
A50-2800-INF-W

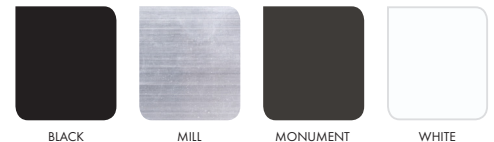
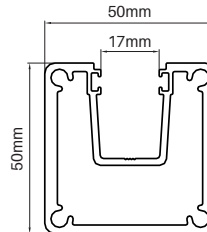
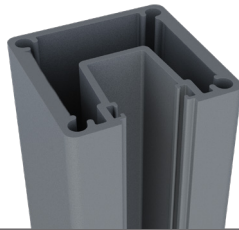


5800MM

ONE WAY DELUXE POST

- 5800mm long in alloy 6106 T6
- Features 2 x side with 3.7mm wall thickness for increased strength
- lxx = 181.85 x 10E3 mmE4
- lyy = 234.16 x 10E3 mmE4

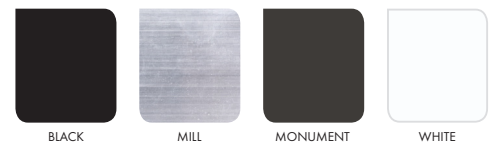
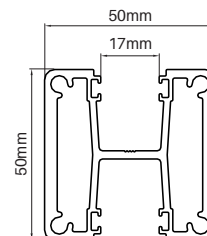
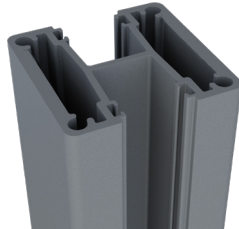
CODE: A50-5800D-1W-B
A50-5800D-1W-M
A50-5800D-1W-MN
A50-5800D-1W-W



TWO WAY DELUXE POST

- 5800mm long in alloy 6106 T6
- Features 2 x side with 3.7mm wall thickness for increased strength
- lxx = 172.95 x 10E3 mmE4
- lyy = 243.88 x 10E3 mmE4

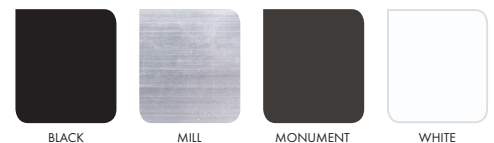
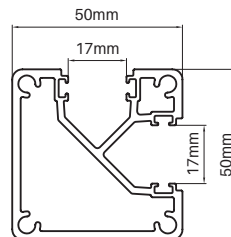
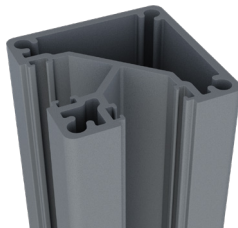
CODE: A50-5800D-2W-B
A50-5800D-2W-M
A50-5800D-2W-MN
A50-5800D-2W-W



90 DEGREE POST

- 5800mm long in alloy 6106 T6
- lxx = 186.75 x 10E3 mmE4
- lyy = 183.75 x 10E3 mmE4

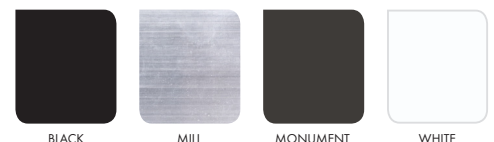
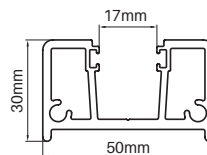
CODE: A50-5800-90-B
A50-5800-90-M
A50-5800-90-MN
A50-5800-90-W



HALF

- 5800mm long in alloy 6005 T6

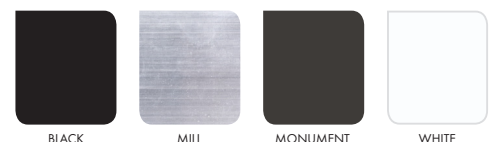
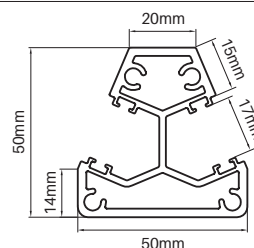
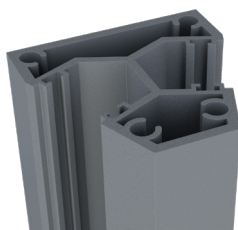
CODE: A50-5800-HALF-B
A50-5800-HALF-M
A50-5800-HALF-MN
A50-5800-HALF-W



135 DEGREE POST

- 5800mm long in alloy 6005 T6

CODE: A50-5800-135-B
A50-5800-135-M
A50-5800-135-MN
A50-5800-135-W

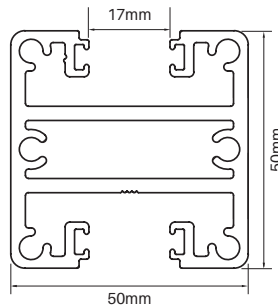
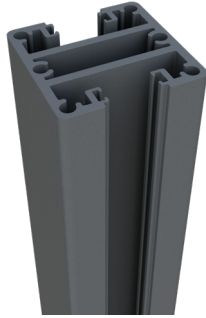


6100MM 2 WAY DOUBLE WEB – 50X50 PROFILE

DOUBLE WEBBED DELUXE 50X50MM

- 6100mm long double webbed profile in alloy 6106 T6
- Features 2 x sides with 3.1mm wall thickness for increased strength
- To turn into 1 way post, snap in infill on one side of profile
- Can be face mount installed with M12 fixing through double web cavity
- Non weld handrail bracket can also be installed in centre of cavity – contact us for more info
- $I_{xx} = 174.92 \times 10E3 \text{ mmE4}$
- $I_{yy} = 260.79 \times 10E3 \text{ mmE4}$

CODE: A5050-6100D-2W-M

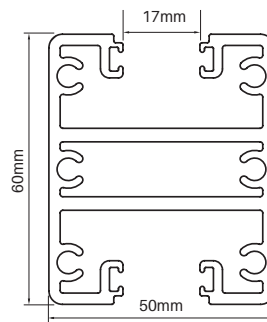
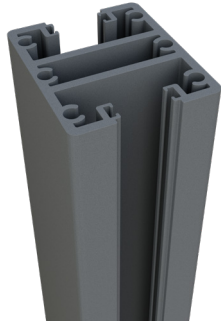


6100MM 2 WAY DOUBLE WEB – 60X50 PROFILE

DOUBLE WEBBED 60X50MM

- 6100mm long double webbed profile in alloy 6106 T6
- Rectangular 60x50mm profile provides superior strength
- To turn into 1 way post, snap in infill on one side of profile
- Can be face mount installed with M12 fixing through double web cavity
- Non weld handrail bracket can also be installed in centre of cavity – contact us for more info
- $I_{xx} = 278.74 \times 10E3 \text{ mmE4}$
- $I_{yy} = 295.58 \times 10E3 \text{ mmE4}$

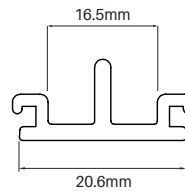
CODE: A6050-6100-2W-M



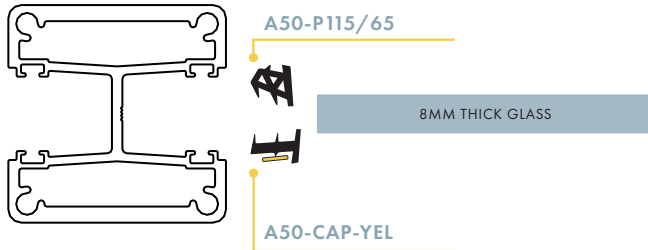
CAPTIVE INFILL

- 6100mm long captive infill
- Locks into glazing pocket so cannot 'pop' out
- Ideal if using double webbed post for face mount install

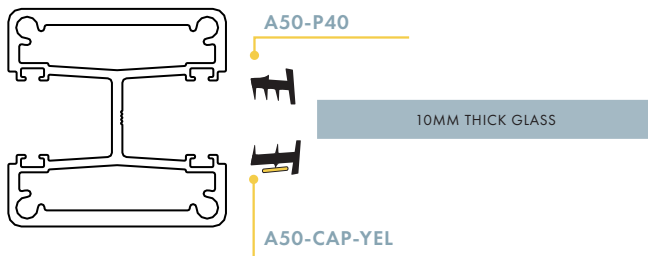
CODE: A50-6100-INFCAP-M



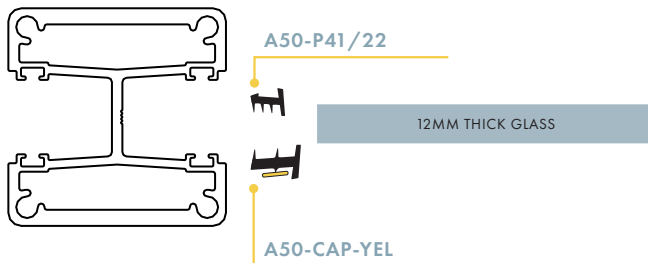
8MM GLASS PANELS P115/65 & YELLOW CAPTIVE



10MM GLASS PANELS P40 & YELLOW CAPTIVE

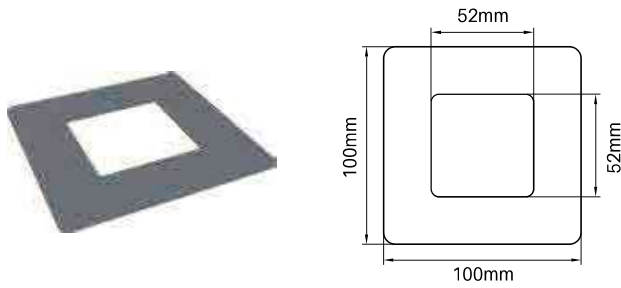


12MM GLASS PANELS P41/22 & YELLOW CAPTIVE





AUSTRALIS ACCESSORIES

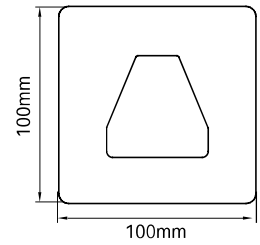


Aluminium dress ring

Order Code: XP-DR

- Suits 1 way, 2 way, 90° and full core drill posts

Finishes —

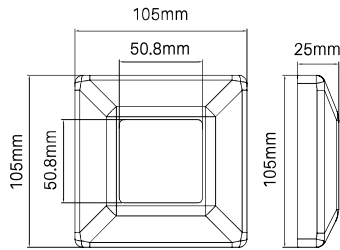


Aluminium 135° dress ring

Order Code: A50-135DR

- Suits 135° core drill posts

Finishes —

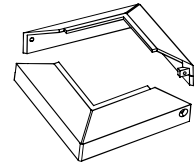
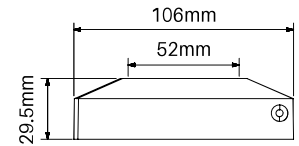


Domical cover

Order Code: A50-DC

- Alloy ADC12
- Suits all base plated posts

Finishes —



Two part domical cover

Order Code: XP-DC-2P

- Alloy ADC12 - Suits all base plated posts
- Can be fitted to posts after glass is installed - Discreet screws fixes two parts together around post and base plate

Finishes —





AUSTRALIS ACCESSORIES



PACK OF 50

CSK 50mm long square drive

Order Code: CSK-12GX50-50PK

- 12G x 50mm long – SS304 – Phillips #3 head
- Pack of 50
- Use to affix base plate to posts if not using welded on base plates



Driver bit

Order Code: DB-PH3

- Suits Phillips #3 screw head
- S2 tool steel
- 50mm long

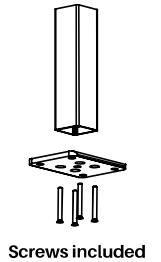
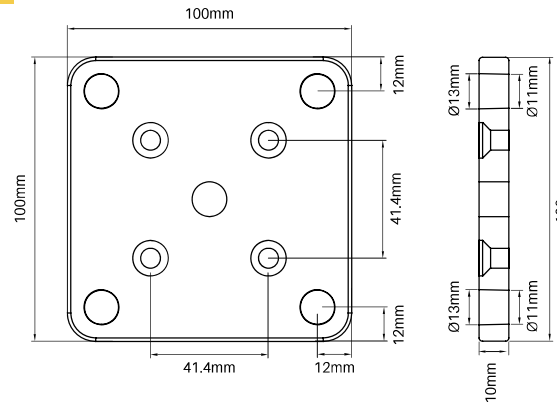


Vinyl wedge roller

- Ideal for rolling wedge rubber
- Order Code: VROLLER



Suits full, 1 way, 2 way & 90° posts



Screws included

Aluminium base plate set

Order Code: XP-BP-SET

- Simply screw base plate onto core drill post
- Australis post extrusion specially designed with screw flutes
- 4x 12G x 50mm long CSK screws included in set
- Suitable for pool fencing load requirements

Finishes —



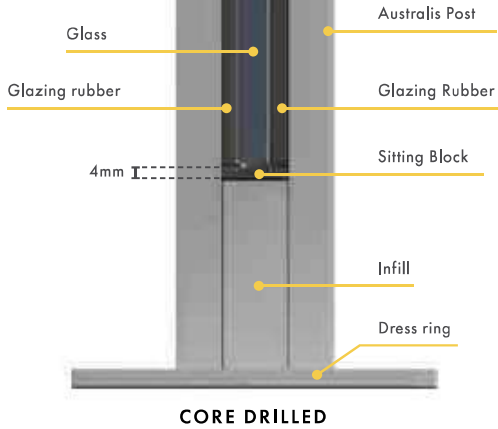
BLACK MONUMENT MILL WHITE





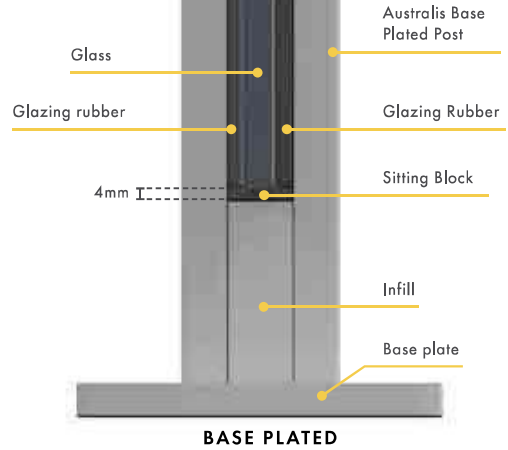
INFILL & SITTING BLOCK PLACEMENT

CORE DRILL POST



CORE DRILLED

BASE PLATED POST



BASE PLATED

GATE INSTALL TIPS

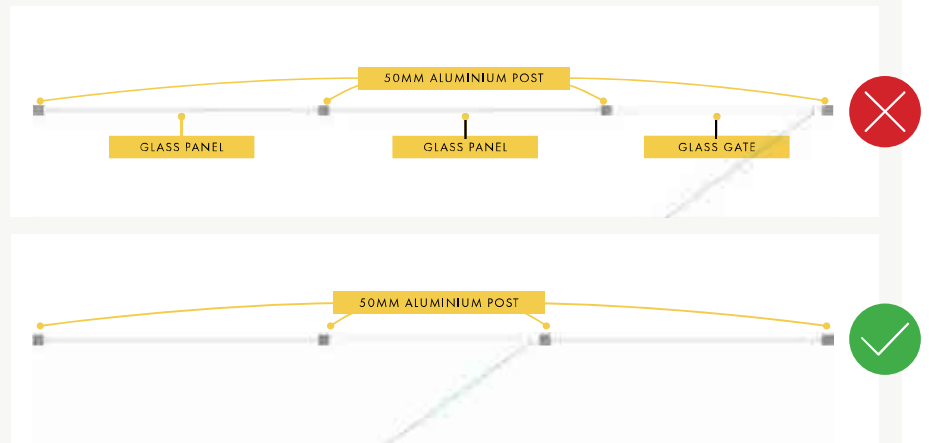
GATE HINGED FROM STAND ALONE POINT

Due to the weight of the glass gate it is not recommended for a gate to be hinged from a stand alone aluminium post. A glass panel at least 400mm wide is recommended to be attached to the hinge post to give the post the support it needs.

Alternatively, use a stainless steel heavy duty post for a stand alone gate post installation.

Refer pages 76-77

ALUMINIUM SQUARE POSTS

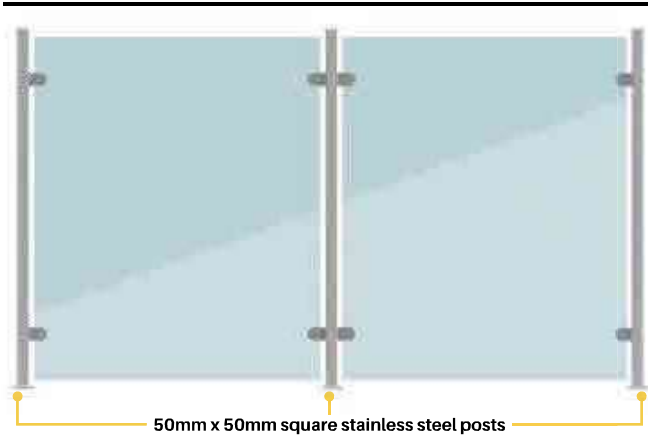




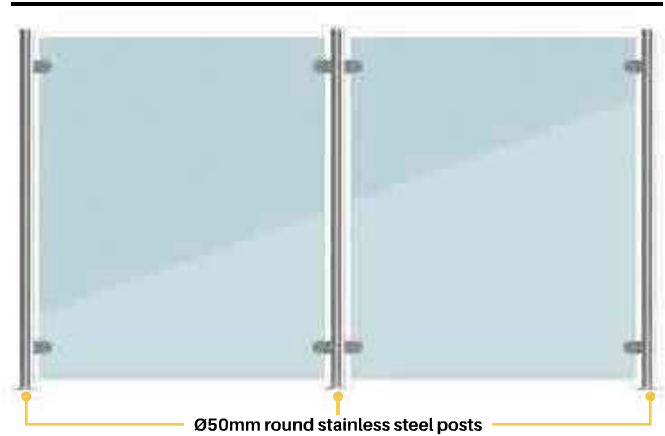
SQ50 & MOD50 SERIES

Stainless steel posts with D clamps are a stylish look for any pool fence. We can provide round or square stainless steel 316 posts with D clamps and accessories to achieve desired configurations.

SQ50 square



MOD50 round





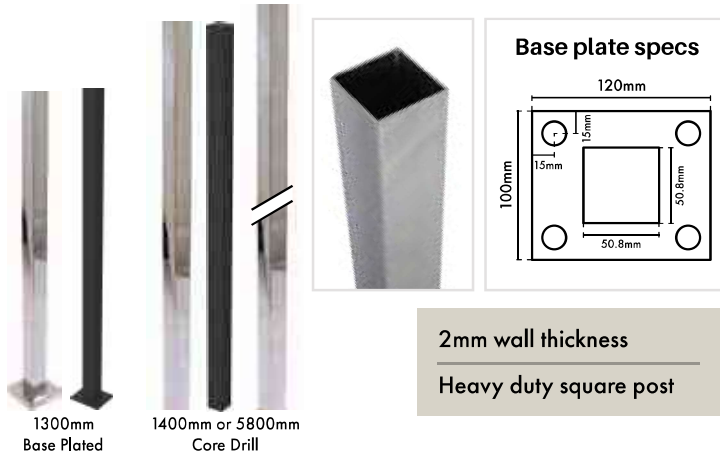
3

STAINLESS POST & GATE LAYOUTS

A heavy duty stainless steel post to hinge or latch a glass gate may be required in certain installation situations.

It is important a heavy duty post is used to prevent the post bending under the weight of the gate. It is also very important that the substrate is sturdy and cannot bend/ or flex – such as when installing a base plated post to a timber deck with a hinging glass gate.

SELECT BETWEEN SQ50 SQUARE OR MOD50 ROUND HEAVY DUTY STAINLESS STEEL POSTS



2mm wall thickness
Heavy duty square post

SQ50 Heavy duty post – 50.8x50.8mm square

SS316 – 2mm wall thickness – various lengths

Polish, satin or matt black finish

Order Code:

SQ50-1300-HDBP (Base plated – Includes top cap & domical cover)

SQ50-1400-HD (Core drill – Includes top cap)

SQ50-5800S-5050 (Polish or satin only. Top caps sold separately)

- Heavy duty 2mm wall thickness
- Stainless steel 316L – low carbon stainless steel
- Welded base plated posts available in 1300mm high
- Core drill post available in 1400mm or 5800mm high



Post accessories SS316



SQ50 post top cap

Order Code: **SQ50-HDTC**



SQ50 dress ring

110x110mm outer
Order Code: **SQ50-DR**



SQ50 domical cover

Order Code: **SQ50-DC**



SQ50 base plate (weld on)

Order Code: **SQ50-BP**

See pages 108-109 for full specs



2.7mm wall thickness
Heavy duty round post

Ø50.8mm MOD50

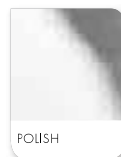
SS316L – 2.7mm wall thickness – various lengths

Polish finish

Order Code: **MOD50-1300-BPSET-P** (Polish – Base plated)

MOD50-1400-HD-P (Polish – Core drill)

- Heavy duty 2.7mm wall thickness
- Stainless steel 316L – low carbon stainless steel
- Welded base plated posts available in 1300mm high
- Core drill post available in 1400mm high



Post accessories SS316



MOD50 post top cap

Order Code: **MOD50-HDTC-P**



MOD50 dress ring

Ø100mm outer
Order Code: **MOD50-DR-P**



MOD50 domical cover

Order Code: **MOD50-DC-P**



MOD50 base plate (weld on)

Order Code: **MOD50-BP-P**

See pages 110-113 for full specs



SQ50 POST RANGE

SQ50 range 50x50mm posts

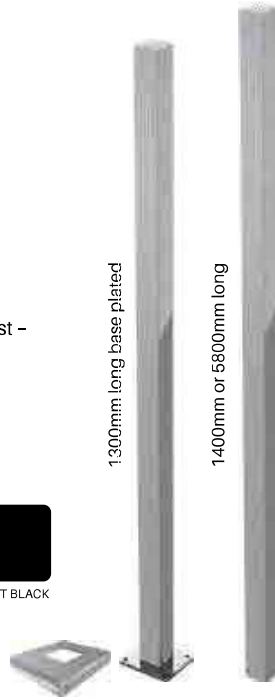
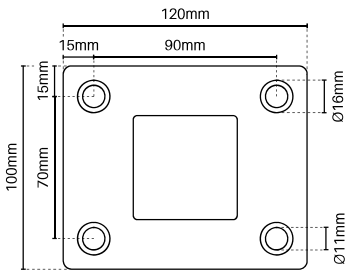
SS316 – Polish, satin or matt black finish

Codes: SQ50-1300-HDBP-P/S/B (Base plated)

SQ50-1400-HD-P/S/B (Core drill)

SQ50-5800S-5050-P/S (Core drill)

- Core drill posts – 1400mm H / Base plated posts – 1300mm H
- Also available 5800mm long (polish & satin)
- 2mm wall thickness
- Ideal post for fixing of D-clamps
- Top cap and domical cover included with base plated 1300mmH post - top cap also included with 1400mm core drill post

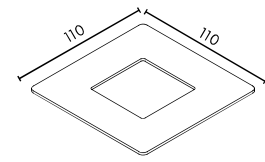


SQ50 flat dress ring

SS316

Order Code: SQ50-DR-P/S/B

- Dress ring suits 50.8 x 50.8mm square posts
- 110 x 110mm outer dimensions

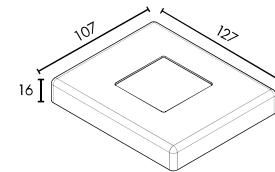


SQ50 domical cover

SS316

Order Code: SQ50-DC-P/S/B

- Domical cover for base plated posts
- 16mm high cover

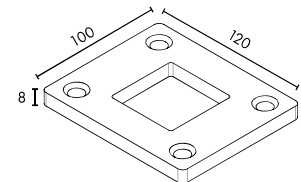
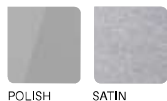


SQ50 base plate

SS316

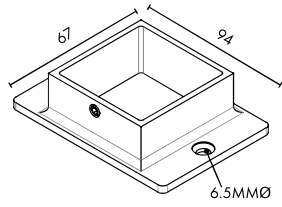
Order Code: SQ50-BP-P/S

- 8mm thick base plate
- Weld on base plate suits SQ50 post





SQ50 ACCESSORIES



Oblong flange

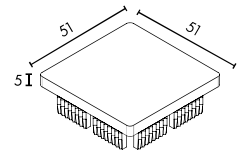
SS316

Code: SQ50-OBP-P/S

- Use as a wall plate
- 25mm deep throat gives flexibility for install
- Internal grub screws hold square tube in place or mechanically fix/weld oblong flange to tube



POLISH SATIN



Top cap

SS316

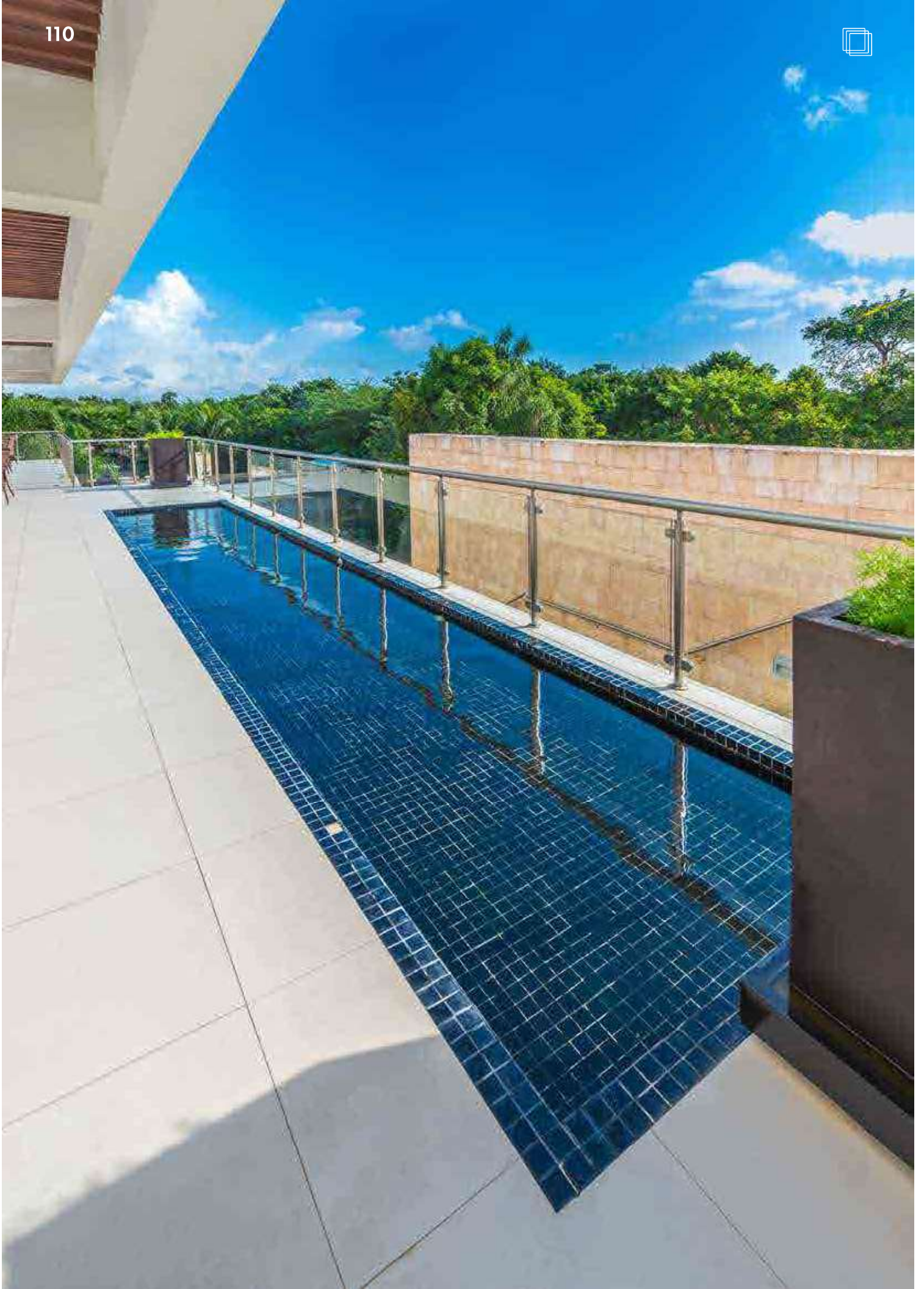
Code: SQ50-HDTC-P/S/B

- Finish a post with the matching top cap
- Epoxy, weld or rivet cap to post



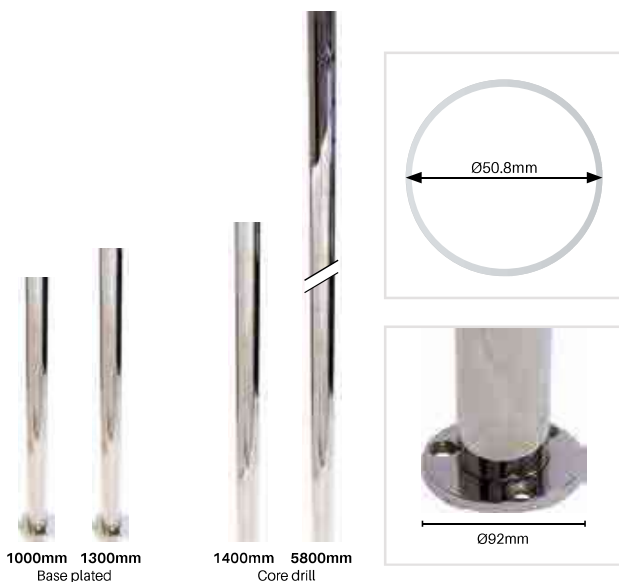
POLISH SATIN MATT BLACK







MOD50 ROUND POSTS



Ø50.8mm MOD50 posts & tube

SS316L – various lengths

Polish finish

Order Code: **MOD50-1000-BP-P (Polish – Base plated)**
MOD50-1300-BPSET-P (Polish – Base plated)
MOD50-1400-P (Polish – Core drill)
MOD50-5800C-50D-P (Polish – Core drill)

- Welded base plated posts available in 1000mm and 1300mm high
- Core drill posts available in 1400mm and 5800mm high
- 1.5mm wall thickness
- Stainless steel 316L – low carbon stainless steel

HEAVY DUTY



MOD50 heavy duty posts – Ø50.8mm

SS316L – 2.7mm wall thickness – various lengths

Polish finish

Order Code: **MOD50-1300-BPSET-P (Polish – Base plated)**
MOD50-1400-HD-P (Polish – Core drill)

- Welded base plated posts available in 1300mm high
- Core drill posts available in 1400mm & 2800mm high
- Heavy duty 2.7mm wall thickness
- Stainless steel 316L – low carbon stainless steel



Ideal for hanging stand alone gates

Refer to our balustrade systems catalogue for a full list of modular fittings to suit Ø50.8mm stainless tube



MOD50 COMPONENTS

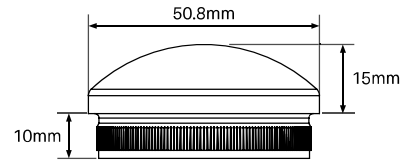
MOD50 domed end cap

SS316

Polish finish

Order Code: **MOD50-ECD-P (Polish)**

- Domed end cap – easy to use tap-in fitting
- Suits 1.5mm wall thickness MOD50 tube/posts
- Epoxy glue, weld or rivet tube for joining strength



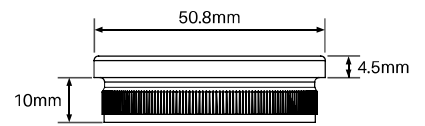
MOD50 flat end cap

SS316

Polish finish

Order Code: **MOD50-ECF-P (Polish)**

- Flat end cap – easy to use tap-in fitting
- Suits 1.5mm wall thickness MOD50 tube/posts
- Epoxy glue, weld or rivet tube for joining strength



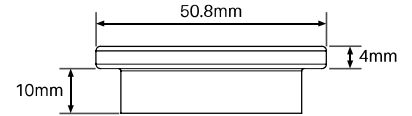
MOD50 heavy duty top cap

SS316

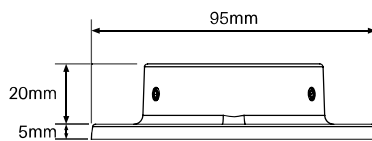
Polish finish

Order Code: **MOD50-HDTC-P (Polish)**

- Top cap to suit 50.8mm tube with 2.7mm wall thickness
- Suits MOD50 heavy duty posts
- Epoxy glue, weld or rivet tube for joining strength



 Suits heavy duty posts (2.7mm thick wall)



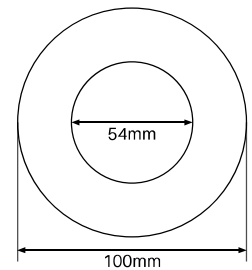
MOD50 base plate flange

SS316

Polish finish

Order Code: **MOD50-BPF-R-P (Polish)**

- Round external fitting flange
- 3x Ø6.5mm holes (with 3x Ø11mm CSK holes on top)
- Suits MOD50 posts
- Weld or drill/tap tube for joining strength



MOD50 dress ring

SS316

Polish finish

Order Code: **MOD50-DR-P (Polish)**

- Suits MOD50 posts
- Ø54mm inner opening, Ø100mm outer



MOD50 COMPONENTS



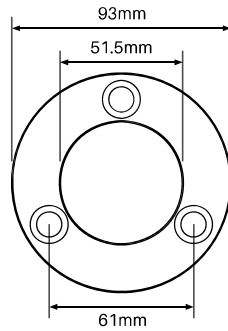
MOD50 base plate

SS316

Polish finish

Order Code: MOD50-BP-P (Polish)

- Round base plate - Ø93mm outer
- 3x Ø11mm holes (with 3x Ø16mm CSK holes on top)
- 8mm thick
- Suits welding to MOD50 posts

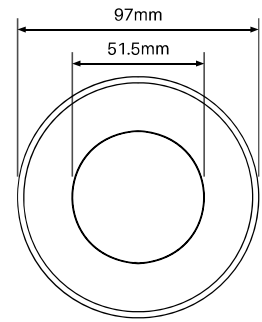


MOD50 domical cover

SS316

Polish finish

Order Code: MOD50-DC-P (Polish)



M8 blind rivet nut

SOLD INDIVIDUALLY

Order Code: MOD-M8-BRN

- SS304
- Threaded inserts for affixing D clamps to posts with 0.5mm to 3mm wall thicknesses
- Insert & crimp using hand rivet nut tool



M8 x 20 cap screw

SOLD INDIVIDUALLY

Order Code: MOD-M8-CS

- SS304
- Use with blind rivet nut to affix glass clamp to post



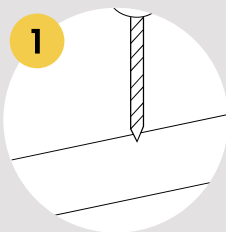
Rivet nut hand tool

HAND OPERATED

Order Code: RIV-TOOL

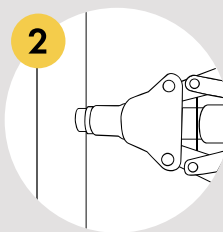
- Allows quick insertion of stainless rivet nuts into posts
- Push/pull rod for quick thread insert and release
- Includes M4, M5, M6, M8 & M10 mandrel set
- Adjustable stroke for different wall thickness on posts (0.5mm to 3mm)
- Spare M8 mandrel also available - Sold separately

Install guide for D clamps



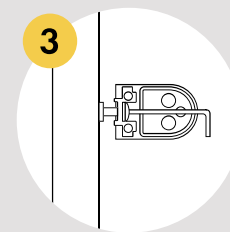
1 Drill hole in post

Mark out & drill holes to suit diameter of blind rivet nut



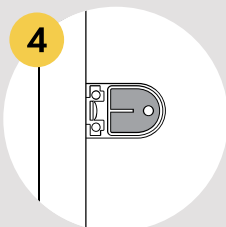
2 Install the blind rivet nut

Using the rivet hand tool



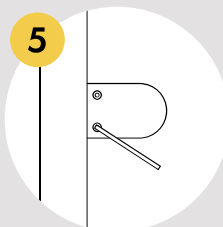
3 Install the D clamp onto post

Screw the cap head screw into the blind rivet nut through D clamp



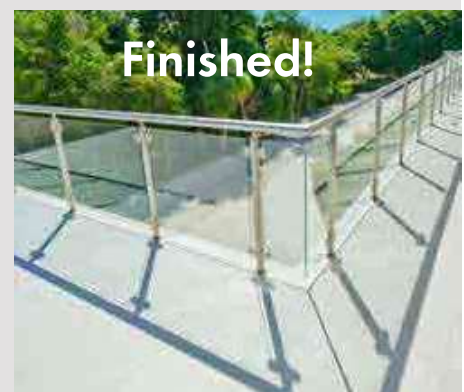
4 Insert rubber gaskets

Place the rubber gaskets onto both halves of the D clamp



5 Insert glass & tighten

Place glass into position and tighten the second half of D clamp



Finished!