

BLITZ GLASS

Balustrading Handrails



www.blitzglass.com.au



(07) 5493 9779



admin@blitzglass.com.au

THE ORIGINAL 25x21 NANORAIL[®] RANGE

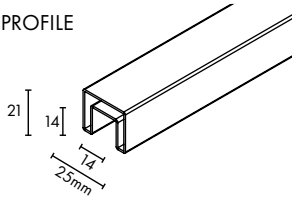
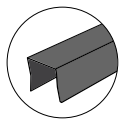
2900MM HANDRAIL

CODE: STG-R2900-2521

LENGTH 2900MM

25x21MM PROFILE

SS316L



Use with PVC NANORAIL glazing rubber 2900mm L
STG-NANO-GR

POLISH



SATIN



MATT BLACK

NOT AVAILABLE

MATT WHITE

NOT AVAILABLE

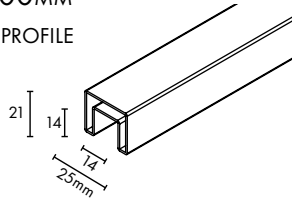
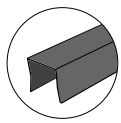
5800MM HANDRAIL

CODE: STG-R5800-2521

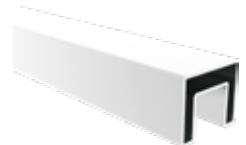
LENGTH 5800MM

25x21MM PROFILE

SS316L



Use with PVC NANORAIL glazing rubber 2900mm L
STG-NANO-GR

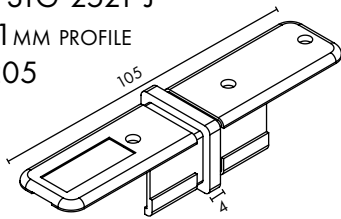


JOINER

CODE: STG-2521-J

25x21MM PROFILE

SS2205

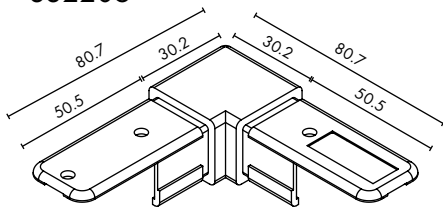


90° JOINER

CODE: STG-2521-90J

25x21MM PROFILE

SS2205

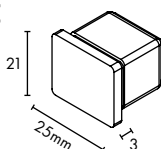


END CAP

CODE: STG-2521-EC

25x21MM PROFILE

SS2205



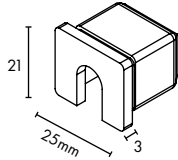
SLOTTED END CAP

CODE: STG-2521-SC

25x21 MM PROFILE

SS2205

(INCLUDES 55MM LONG SS304 M6 SCREW)



POLISH



SATIN



MATT BLACK

NOT AVAILABLE

MATT WHITE

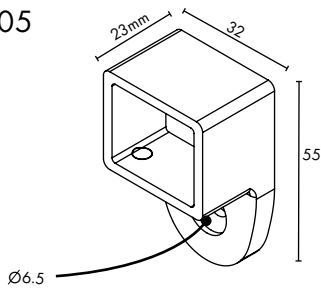
NOT AVAILABLE

WALL PLATE

CODE: STG-2521-WP

25x21 MM PROFILE

SS2205

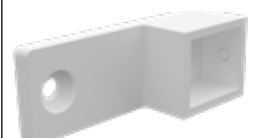
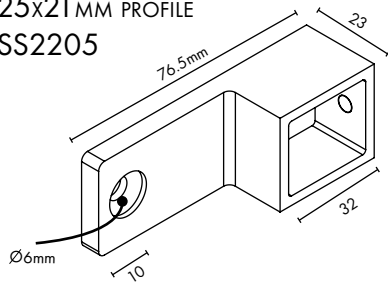


EXTENDED WALL PLATE

CODE: STG-2521-WPEXT

25x21 MM PROFILE

SS2205

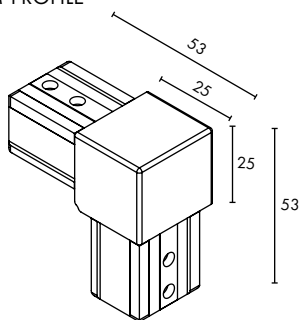


VERTICAL JOINER

CODE: STG-2521-VERTJ

25x21 MM PROFILE

SS2205



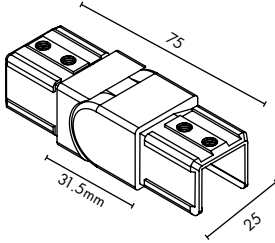
NOT AVAILABLE

VERTICAL ADJUSTABLE JOINER

CODE: STG-2521-VJA

25x21 MM PROFILE

SS2205



POLISH



SATIN



MATT BLACK



MATT WHITE

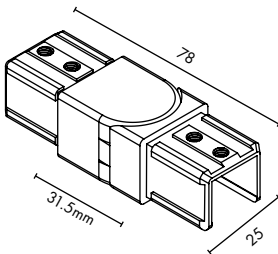


HORIZONTAL ADJUSTABLE JOINER

CODE: STG-2521-HJA

25x21 MM PROFILE

SS2205



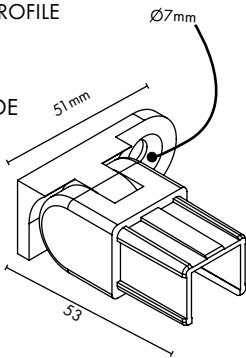
WALL PLATE VERTICAL ADJUSTABLE JOINER - RIGHT

CODE: STG-2521-WP-VA-R

25x21 MM PROFILE

SS2205

WALL FIXING ON RIGHT SIDE



NOT AVAILABLE

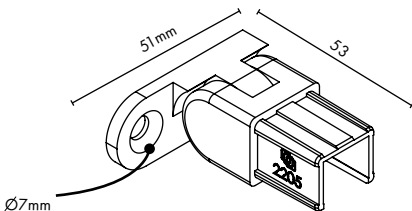
WALL PLATE VERTICAL ADJUSTABLE JOINER - LEFT

CODE: STG-2521-WP-VA-L

25x21 MM PROFILE

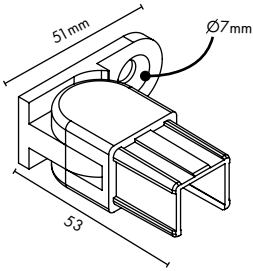
SS2205

WALL FIXING ON LEFT SIDE

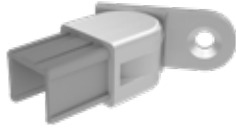


NOT AVAILABLE

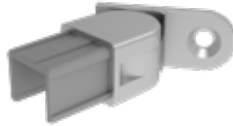
**WALL PLATE HORIZONTAL
ADJUSTABLE JOINER - RIGHT**
CODE: STG-2521-WP-HA-R
25x21 MM PROFILE
SS2205
WALL FIXING ON RIGHT SIDE



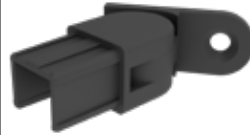
POLISH



SATIN



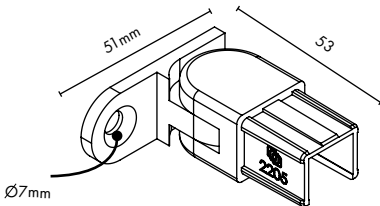
MATT BLACK



MATT WHITE

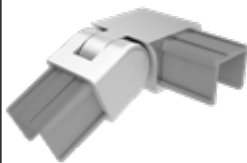
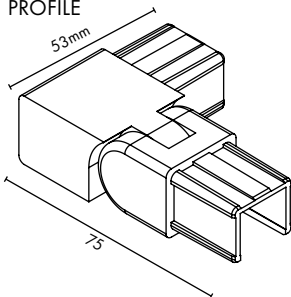
NOT AVAILABLE

**WALL PLATE HORIZONTAL
ADJUSTABLE JOINER - LEFT**
CODE: STG-2521-WP-HA-L
25x21 MM PROFILE
SS2205
WALL FIXING ON LEFT SIDE



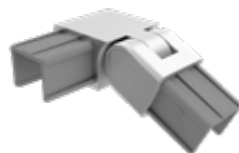
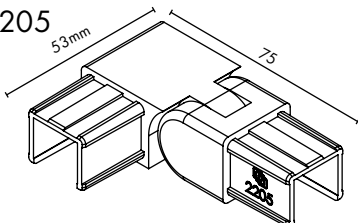
NOT AVAILABLE

**90° VERTICAL ADJUSTABLE
JOINER - RIGHT**
CODE:
STG-2521-90-VA-R
25x21 MM PROFILE
SS2205



NOT AVAILABLE

**90° VERTICAL ADJUSTABLE
JOINER - LEFT**
CODE:
STG-2521-90-VA-L
25x21 MM PROFILE
SS2205



NOT AVAILABLE

THE ORIGINAL 25x21 NANORAIL® RANGE MECHANICAL FIXING GUIDE

PARTS



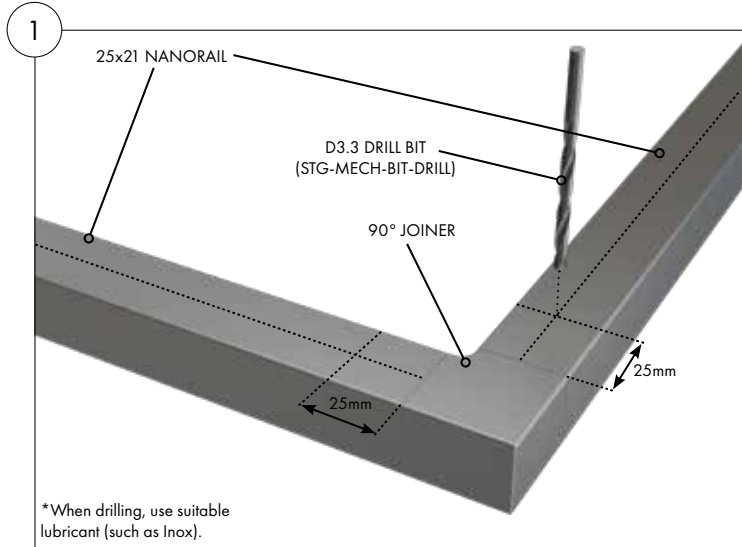
STG-MECH-BIT-CSK



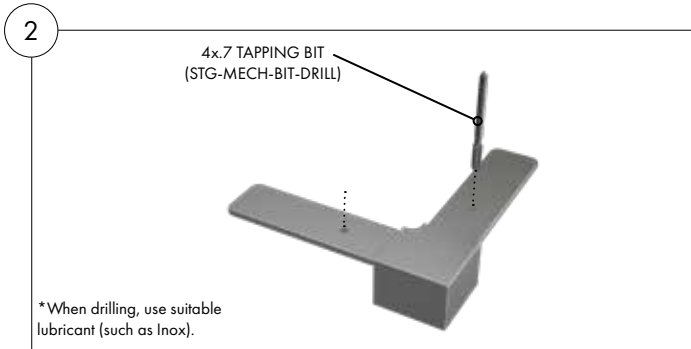
STG-MECH-BIT-DRILL



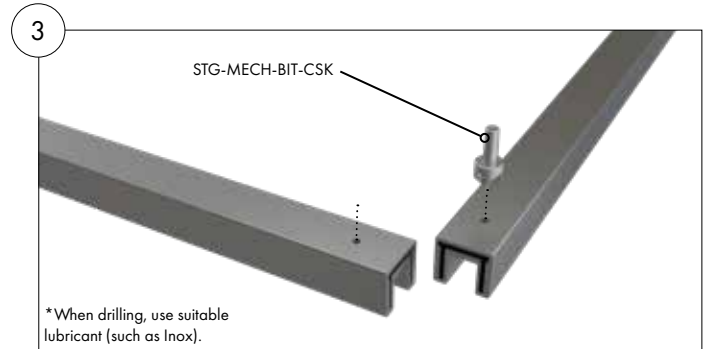
STG-MECH-SCREW-20PK
SS316 M4 x 5mm countersunk screw



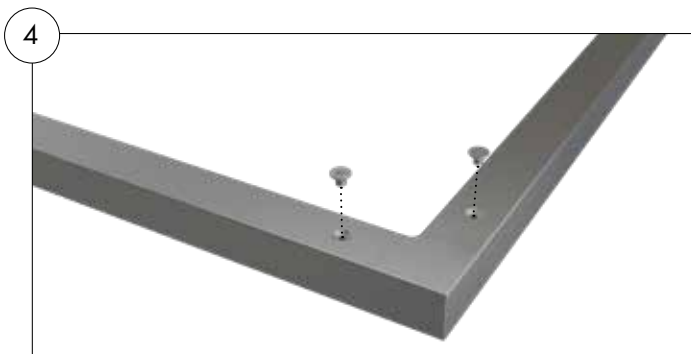
Place handrail on glass and mark holes in the centre of the handrails, 25mm from the handrail edge where it meets the 90° joiner. Remove handrail from glass and position on a stable, padded surface. Whilst on stable, padded surface, using D3.3 DRILL BIT (STG-MECH-BIT-DRILL), drill holes through both handrail and 90° joiner.



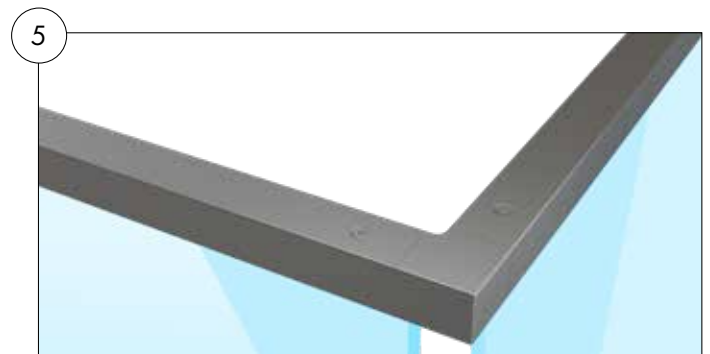
Separate 90 degree joiner from handrail. Using STG-MECH-BIT-DRILL tapping bit, tap thread into the 2 x holes in the 90 degree joiner.



With handrail and 90 degree joiner still separated, use STG-MECH-BIT-CSK and countersink 2 x top holes in handrail.



Insert 90 degree joiner into handrail. Affix 2x STG-MECH-SCREW per corner to fasten handrails to 90° joiner. Can be completed on installed glass or on stable, padded surface.



Re-position handrail on glass.

NOTE: Same principle applies for inline joiner installation.

SOLO[®] 50x10 RANGE

STAINLESS STEEL 316

POLISH

SATIN

MATT BLACK

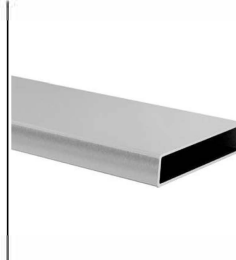
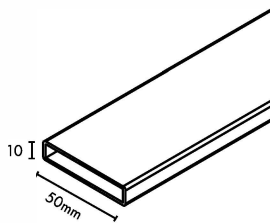
2900MM HANDRAIL

CODE: SOLO-R2900-5010

LENGTH 2900MM

50x10MM PROFILE

SS316



NOT AVAILABLE

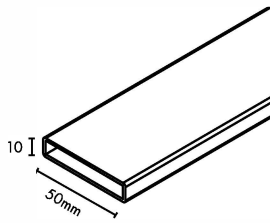
5800MM HANDRAIL

CODE: SOLO-R5800-5010

LENGTH 5800MM

50x10MM PROFILE

SS316

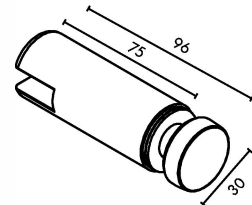


RAIL CONNECTOR

CODE: SOLO-5010-RC

50x10MM PROFILE

SS316

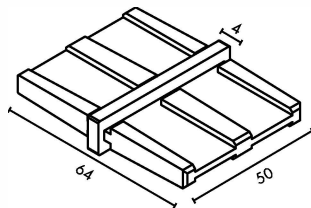


INLINE JOINER

CODE: SOLO-5010-J

50x10MM PROFILE

SS316

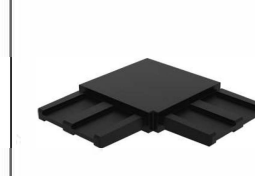
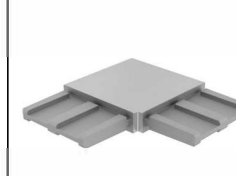
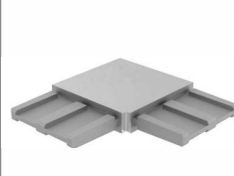
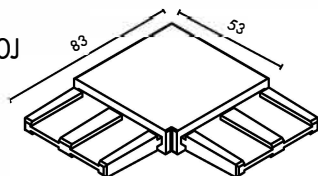


90° JOINER

CODE: SOLO-5010-90J

50x10MM PROFILE

SS316

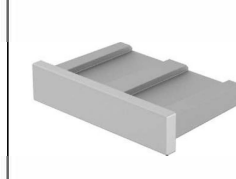
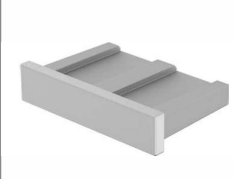
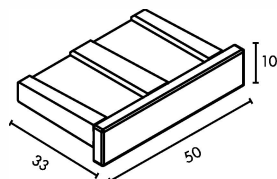


END CAP

CODE: SOLO-5010-EC

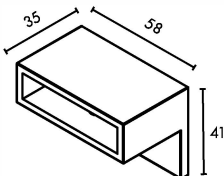
50x10MM PROFILE

SS316



WALL PLATE

CODE: SOLO-5010-WP
50x10MM PROFILE
SS316



POLISH



SATIN

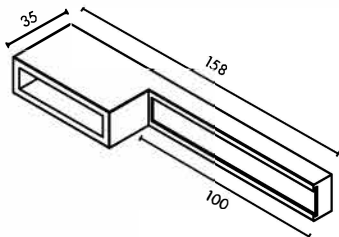


MATT BLACK



EXTENDED WALL PLATE (WITH FIXING COVER PLATE)

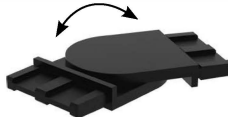
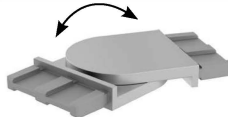
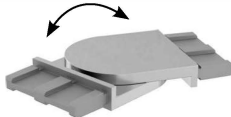
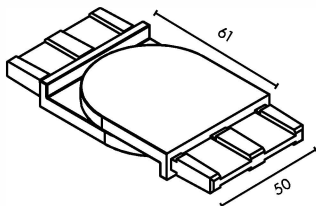
CODE: SOLO-5010-WPEXT
50x10MM PROFILE
SS316



NOT AVAILABLE

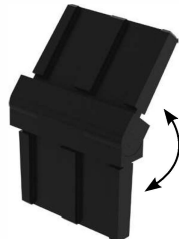
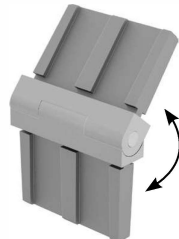
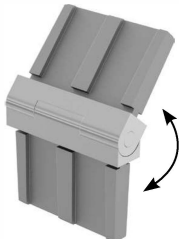
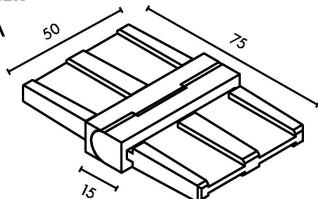
HORIZONTAL ADJUSTABLE JOINER

CODE: SOLO-5010-HJA
50x10MM PROFILE
SS316



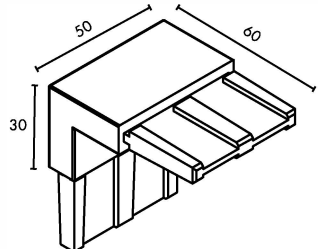
VERTICAL ADJUSTABLE JOINER

CODE: SOLO-5010-VJA
50x10MM PROFILE
SS316



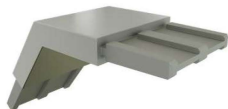
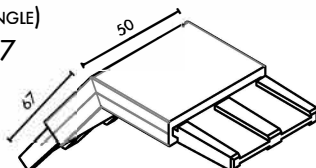
VERTICAL 90° JOINER

CODE: SOLO-5010-VJ
50x10MM PROFILE
SS316



STAIR JOINER (SUITS 37° ANGLE)

CODE: SOLO-5010-J37
50x10MM PROFILE
SS316



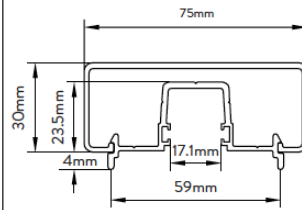
NOT AVAILABLE

5800MM HANDRAIL

RECTANGULAR

- 5800mm 2 part handrail
- Glazing rail screw fixes to post with snap on rectangular rail

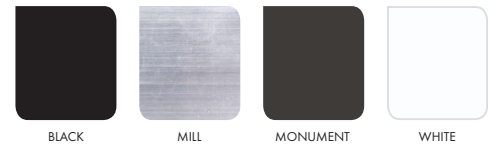
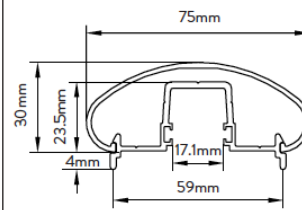
CODE: A50-5800-RHR-B
A50-5800-RHR-M
A50-5800-RHR-MN
A50-5800-RHR-W



OVAL

- 5800mm 2 part handrail
- Glazing rail screw fixes to post with snap on oval rail

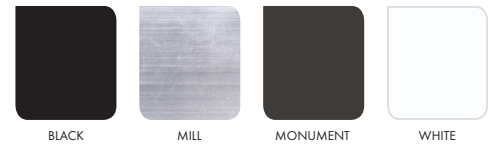
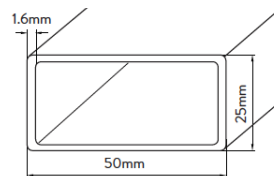
CODE: A50-5800-OHR-B
A50-5800-OHR-M
A50-5800-OHR-MN
A50-5800-OHR-W



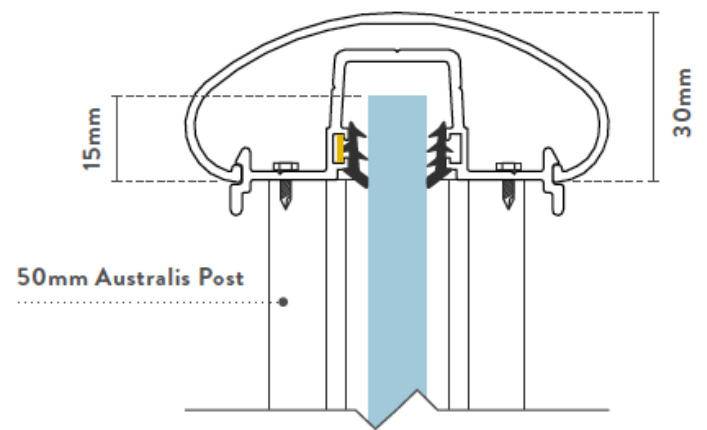
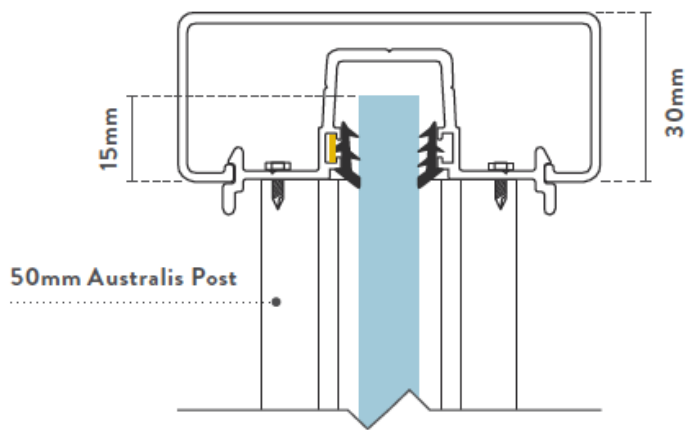
OFFSET

- 5800mm long 50x25x1.6mm profile
- Install onto offset handrail brackets

CODE: A50-OFF-5800-B
A50-OFF-5800-M
A50-OFF-5800-MN
A50-OFF-5800-W



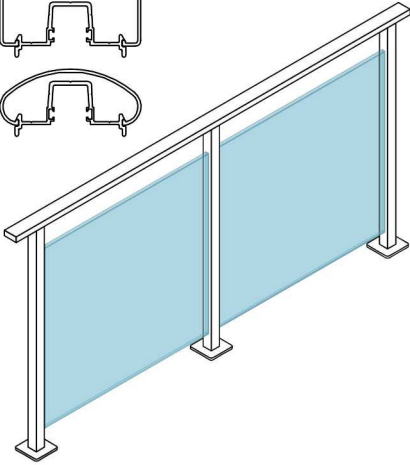
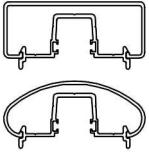
GLASS & POST HEIGHT



Australis Aluminium Handrail

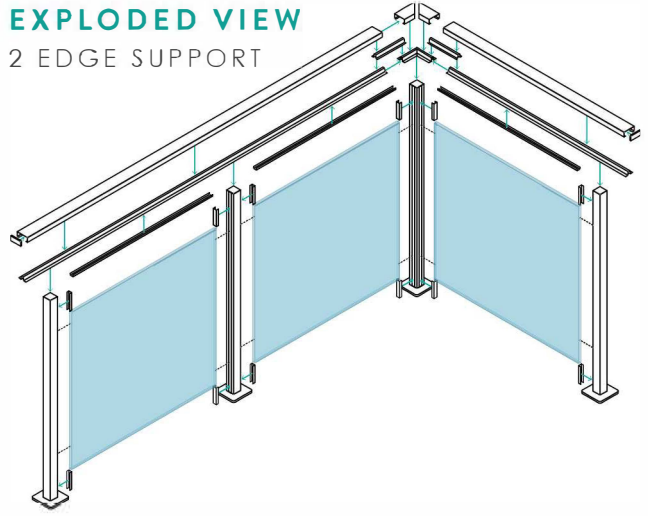
Australis Extrusion Options

2 EDGE SUPPORT

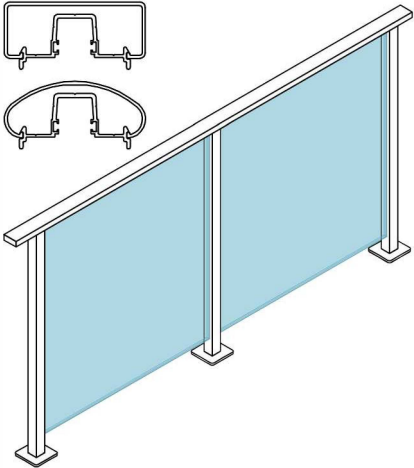
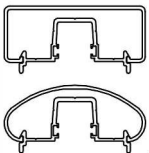


EXPLODED VIEW

2 EDGE SUPPORT

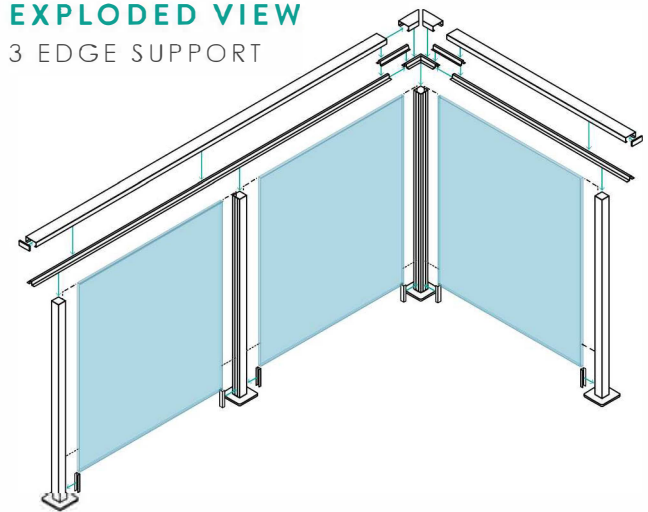


3 EDGE SUPPORT

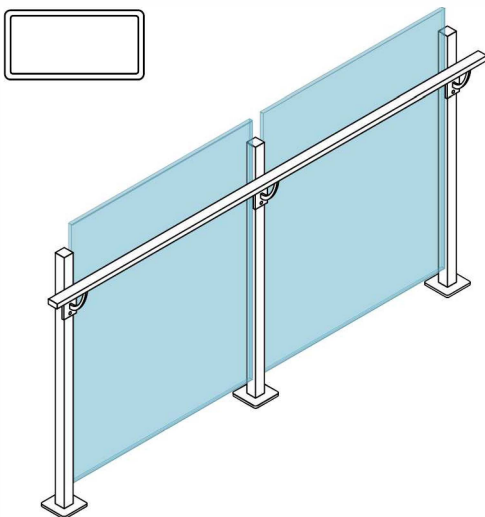
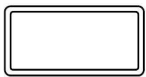


EXPLODED VIEW

3 EDGE SUPPORT

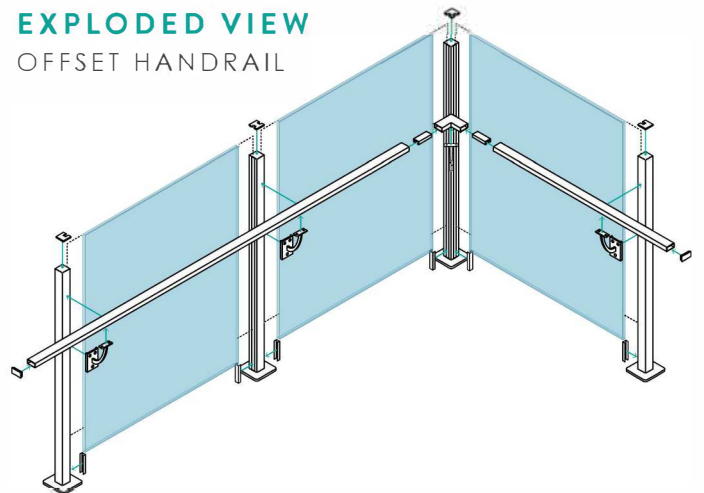


OFFSET HANDRAIL



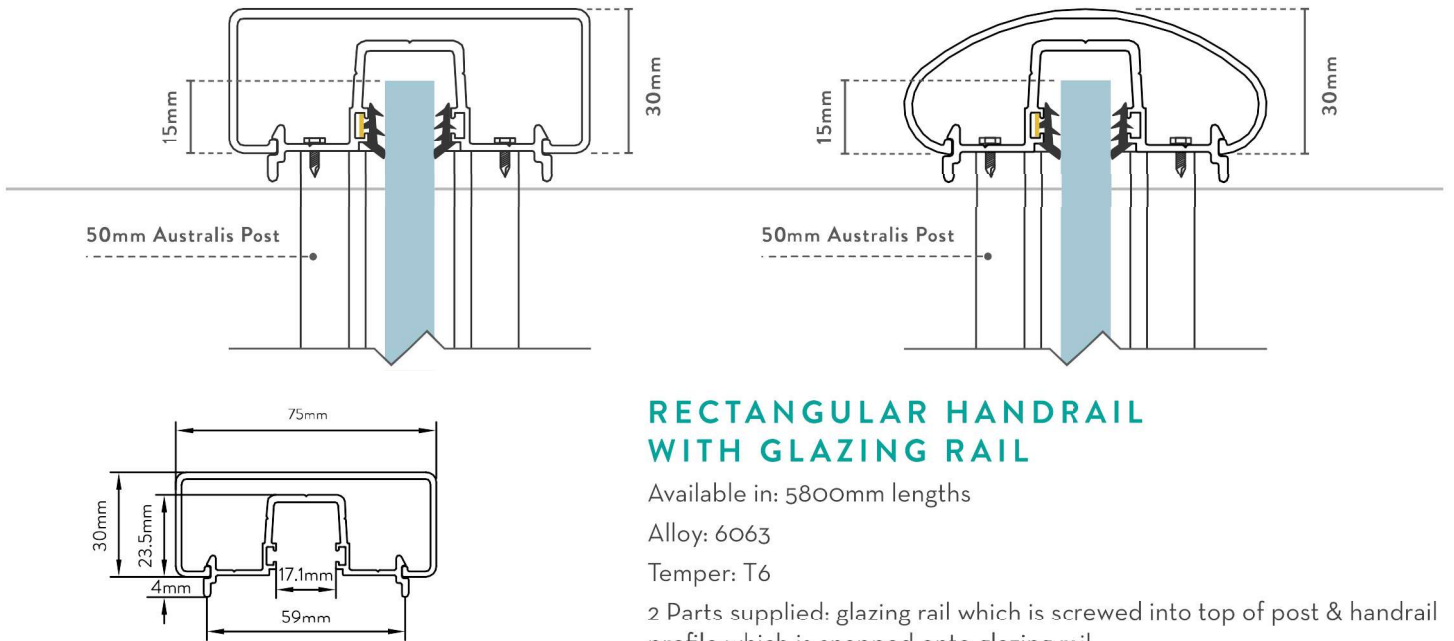
EXPLODED VIEW

OFFSET HANDRAIL



NOTE: ALL DRAWINGS ARE NOT TO SCALE

Australis Aluminium Top Rail Range



RECTANGULAR HANDRAIL WITH GLAZING RAIL

Available in: 5800mm lengths

Alloy: 6063

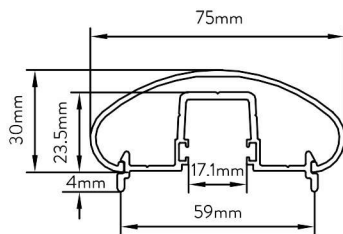
Temper: T6

2 Parts supplied: glazing rail which is screwed into top of post & handrail profile which is snapped onto glazing rail

Glazing rail has 4mm long 'fins' either side for masking any rough cuts on top of glazing post

ORDER CODE: [A50-5800-RHR-B/S/M](#) (5800mm L)

Colours available: Satin Black (B), Palladium Silver (S) & Mill (M)



OVAL HANDRAIL WITH GLAZING RAIL

Available in: 5800mm lengths

Alloy: 6063

Temper: T6

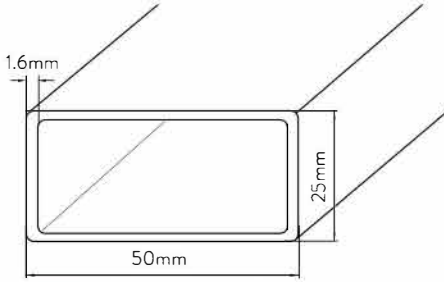
2 Parts supplied: glazing rail which is screwed into top of post & handrail profile which is snapped onto glazing rail

Glazing rail has 4mm long 'fins' either side for masking any rough cuts on top of glazing post

ORDER CODE: [A50-5800-OHR-B/S/M](#) (5800mm L)

Colours available: Satin Black (B), Palladium Silver (S) & Mill (M)

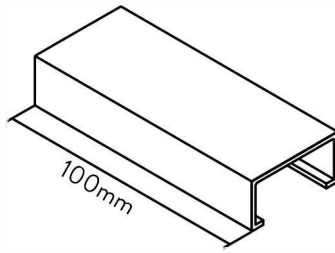
Australis Aluminium Offset Range



OFFSET HANDRAIL

Available in 5800mm lengths
 Alloy: 6063
 Temper: T6
 Rectangular section provides slimline 25mm side profile
 Colours available: Satin Black, Palladium Silver & Mill

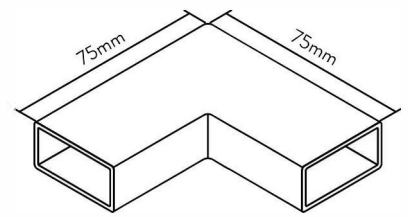
ORDER CODE: **A50-OFF-5800-B/S/M**



OFFSET HANDRAIL INTERNAL JOINER

Alloy: 6063
 Temper: T6
 100mm length - universal internal joiner for joining offset inline rails and/or corner pieces
 Colours available: Satin Black, Palladium Silver & Mill

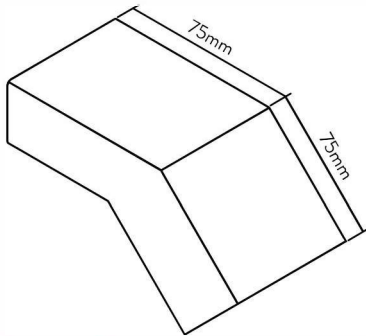
ORDER CODE: **A50-OFF-J-B/S/M**



90° OFFSET HANDRAIL JOINER

Alloy: 6063
 Temper: T6
 Joins offset rails at a 90 degree corner
 Colours available: Satin Black, Palladium Silver & Mill

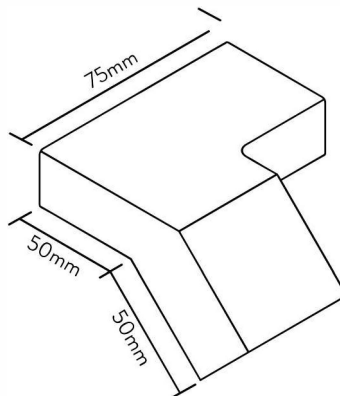
ORDER CODE: **A50-OFF-90J-B/S/M**



RAKED OFFSET HANDRAIL JOINER

Alloy: 6063
 Temper: T6
 Joins offset rails at a 35 degree vertical angle
 Ideal for stair applications
 Colours available: Satin Black, Palladium Silver & Mill

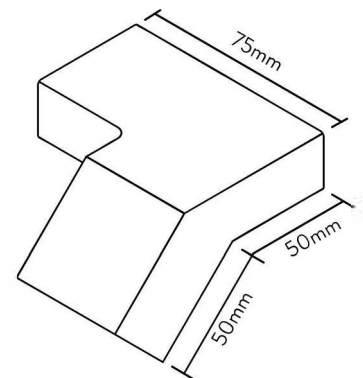
ORDER CODE: **A50-OFF-35J-B/S/M**



RAKED OFFSET CORNER HANDRAIL JOINER - TOP RIGHT

Alloy: 6063
 Temper: T6
 Joins offset inline rail at a 90 degree corner with a 35 degree vertical angle
 Also can be used at bottom of stairs: left side
 Colours available: Satin Black, Palladium Silver & Mill

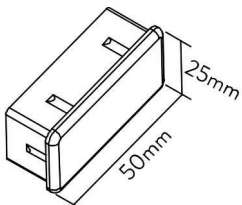
ORDER CODE: **A50-OFF-RCJ-R-B/S/M**



RAKED OFFSET CORNER HANDRAIL JOINER - TOP LEFT

Alloy: 6063
 Temper: T6
 Joins offset inline rail at a 90 degree corner with a 35 degree vertical angle
 Also can be used at bottom of stairs: right side
 Colours available: Satin Black, Palladium Silver & Mill

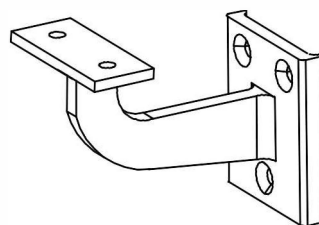
ORDER CODE: **A50-OFF-RCJ-L-B/S/M**



OFFSET HANDRAIL END CAP

Internal fit end cap
 Black plastic

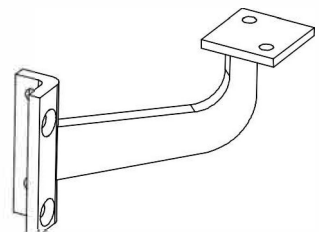
ORDER CODE: **A50-OFF-EC-B**



OFFSET RAIL CONNECTOR

Aluminium bracket affixes to glazing posts allowing for offset handrail installation
 3 x Countersunk fixing holes to post
 Colours available: Satin Black, Palladium Silver & Mill

ORDER CODE: **A50-OFF-RC-B/S/M**



90° OFFSET RAIL CONNECTOR

For internal and external corners
 Aluminium bracket affixes to glazing posts allowing offset handrail installation at a 90 degree angle
 4 x Countersunk fixing holes to post
 Colours available: Satin Black, Palladium Silver & Mill

ORDER CODE: **A50-OFF-RC90-B/S/M**