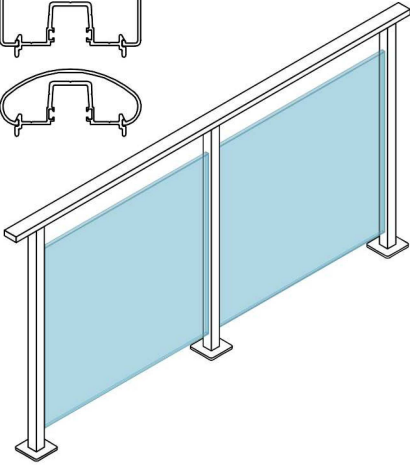
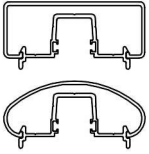


Australis Aluminium Handrail

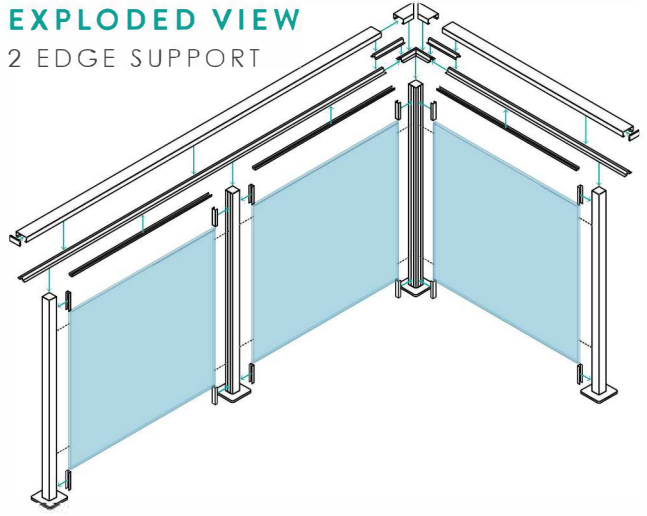
Australis Extrusion Options

2 EDGE SUPPORT

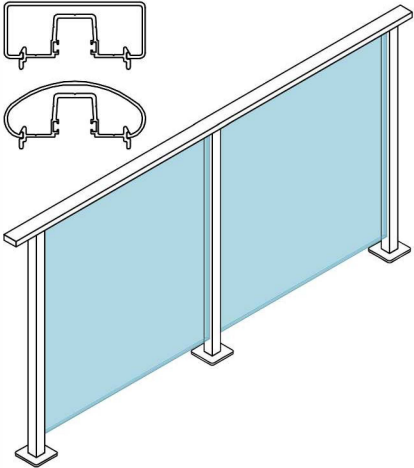
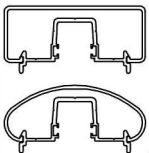


EXPLODED VIEW

2 EDGE SUPPORT

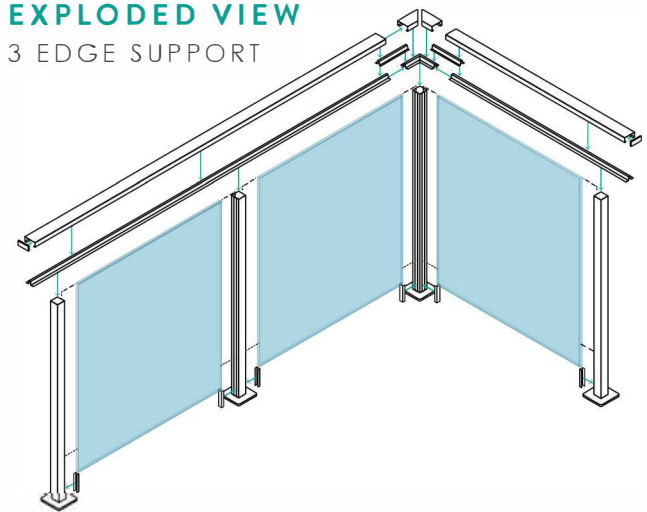


3 EDGE SUPPORT

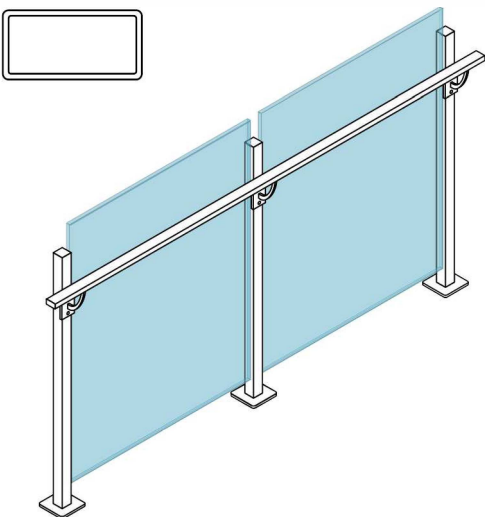
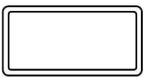


EXPLODED VIEW

3 EDGE SUPPORT

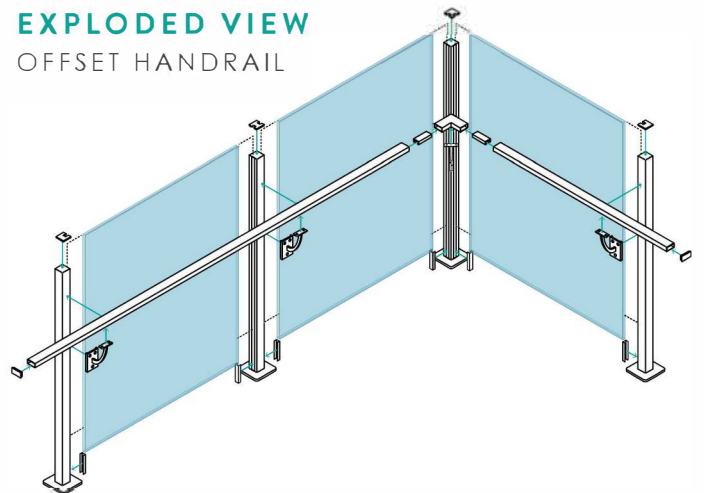


OFFSET HANDRAIL



EXPLODED VIEW

OFFSET HANDRAIL



NOTE: ALL DRAWINGS ARE NOT TO SCALE

AUSTRALIS DELUXE RANGE

50MM ALUMINIUM POST SYSTEM

The Australis 50x50mm Aluminium System has been refreshed to now offer Monument and Pearl White powder coat as stocked finishes in to addition Satin Black. Importantly, the 1 Way & 2 Way profiles have increased wall thickness for better strength & rigidity. Deep glazing pockets provide for ease of installation coupled with captive wedge glazing whereby only one side of the glass panel requires a push in wedge rubber. The system may be used for balustrade or pool fencing application with 8, 10 or 12mm glass. Contact us for technical information and engineering information. A full range of matching accessories such as top caps, dress rings, domical covers, glazing rubbers and more is available.

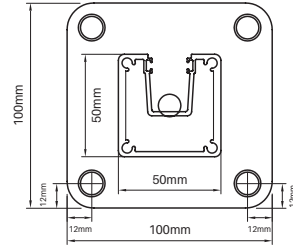
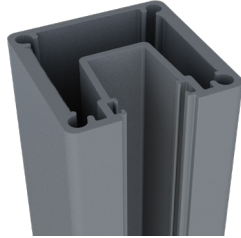
Powder coat colours



*Mill finish also available

1050MM BASE PLATED

- 10mm thick base plate welded to post
- Overall finished height of 1050mm ideal for balustrade application
- Alloy 6106 T6
- 1 Way & 2 Way : features 2 sides with 3.7mm wall thickness for increased strength

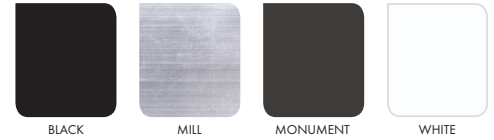
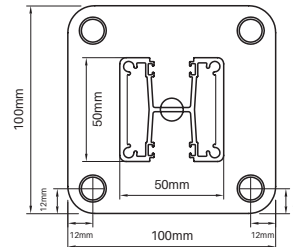


ONE WAY DELUXE POST

CODE: A50-1050D-1WBP-B
A50-1050D-1WBP-M
A50-1050D-1WBP-MN
A50-1050D-1WBP-W

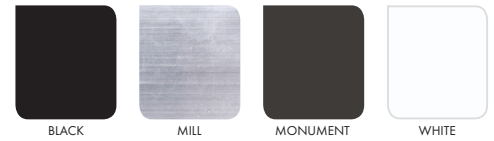
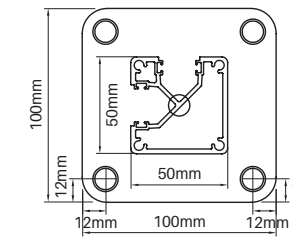
TWO WAY DELUXE POST

CODE: A50-1050D-2WBP-B
A50-1050D-2WBP-M
A50-1050D-2WBP-MN
A50-1050D-2WBP-W



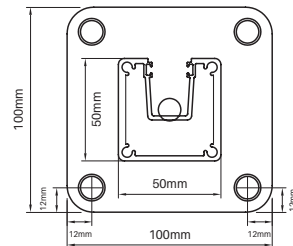
90 DEGREE POST

CODE: A50-1050-90BP-B
A50-1050-90BP-M
A50-1050-90BP-MN
A50-1050-90BP-W



1400MM BASE PLATED WELDED

- 10mm thick base plate welded to post
- Overall finished height of 1400mm suits pool fencing application or where longer balustrade base plated posts required
- Alloy 6106 T6
- 1 Way & 2 Way : features 2 sides with 3.7mm wall thickness for increased strength

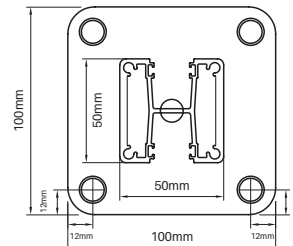


ONE WAY DELUXE POST

CODE: A50-1400D-1WBP-B
A50-1400D-1WBP-M
A50-1400D-1WBP-W

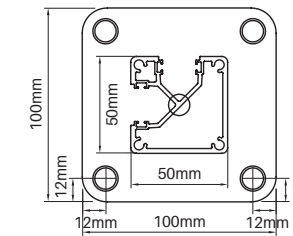
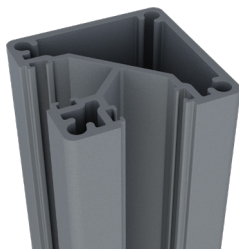
TWO WAY DELUXE POST

CODE: A50-1400D-2WBP-B
A50-1400D-2WBP-M
A50-1400D-2WBP-W



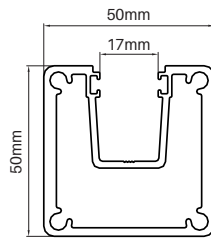
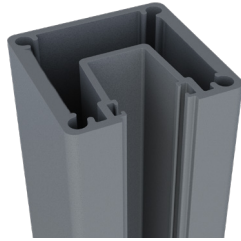
90 DEGREE POST

CODE: A50-1400-90BP-B
A50-1400-90BP-M
A50-1400-90BP-W



1400MM CORE DRILL

- 1400mm long post suits core drill application for pool fencing or balustrade
- Alloy 6106 T6
- 1 Way & 2 Way : features 2 sides with 3.7mm wall thickness for increased strength

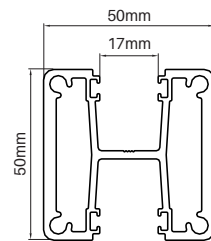


ONE WAY DELUXE POST

CODE: A50-1400D-1W-B
A50-1400D-1W-M
A50-1400D-1W-W

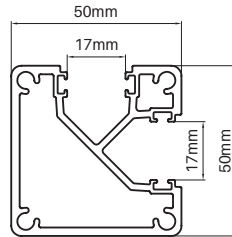
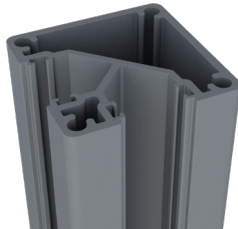
TWO WAY DELUXE POST

CODE: A50-1400D-2W-B
A50-1400D-2W-M
A50-1400D-2W-W



90 DEGREE POST

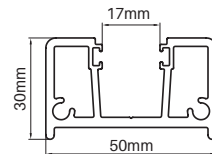
CODE: A50-1400-90-B
A50-1400-90-M
A50-1400-90-W



1400MM HALF POST

- 1400mm half post extrusion fixes to wall/existing structure
- Alloy 6005A T6

CODE: A50-1400-HALF-B
A50-1400-HALF-M
A50-1400-HALF-W

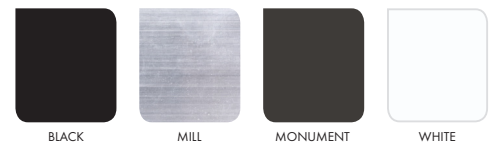
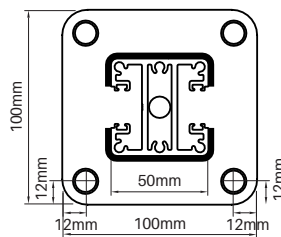
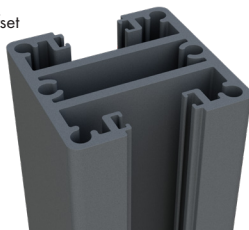


2000MM BASE PLATED WELDED

TWO WAY DOUBLE WEBBED DELUXE POST

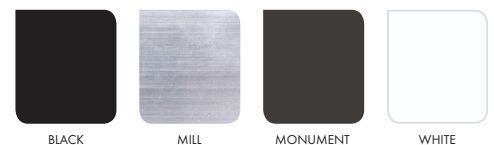
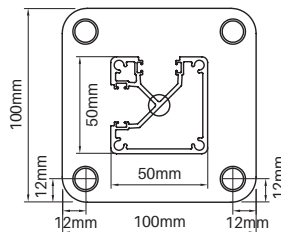
- 2000mm long posts with 10mm base plate welded
- Alloy 6106 T6
- Features 2 sides with 3.1mm wall thickness for increased strength
- 2 Way posts features double web profile for extra strength. Snap in infill on one side to make a 1 way post.
- Double web also provides a cavity for a non weld offset handrail bracket installation (contact us for more info)
- Base plate can be easily cut off if not required
- Longer posts suit installation with higher glass

CODE: A5050-2000D-2WBP-B
A5050-2000D-2WBP-M
A5050-2000D-2WBP-MN
A5050-2000D-2WBP-W



90 DEGREE POST

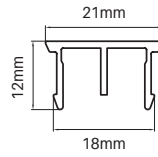
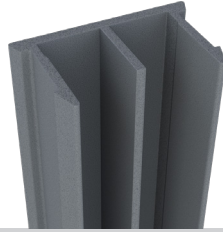
CODE: A50-2000-90BP-B
A50-2000-90BP-M
A50-2000-90BP-MN
A50-2000-90BP-W



1400MM INFILL

- Snap in infill suits all profiles
- Easily cut to required length to set start height of glass

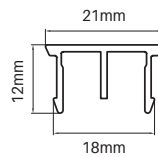
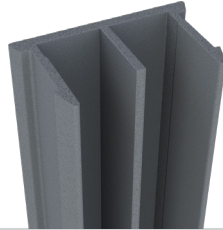
CODE: A50-1400-INF-B
A50-1400-INF-M
A50-1400-INF-MN
A50-1400-INF-W



2800MM INFILL

- Snap in infill suits all profiles
- Easily cut to required length to set start height of glass

CODE: A50-2800-INF-B
A50-2800-INF-M
A50-2800-INF-W

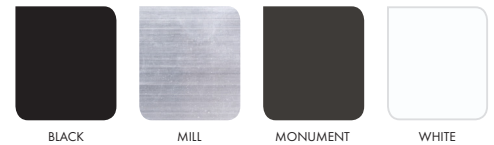
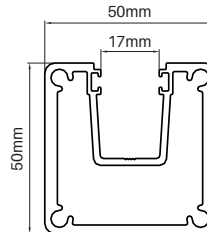
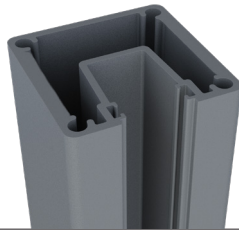


5800MM

ONE WAY DELUXE POST

- 5800mm long in alloy 6106 T6
- Features 2 x side with 3.7mm wall thickness for increased strength
- lxx = 181.85 x 10E3 mmE4
- lyy = 234.16 x 10E3 mmE4

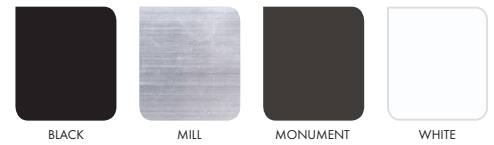
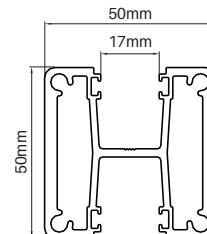
CODE: A50-5800D-1W-B
A50-5800D-1W-M
A50-5800D-1W-MN
A50-5800D-1W-W



TWO WAY DELUXE POST

- 5800mm long in alloy 6106 T6
- Features 2 x side with 3.7mm wall thickness for increased strength
- lxx = 172.95 x 10E3 mmE4
- lyy = 243.88 x 10E3 mmE4

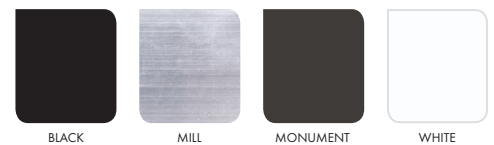
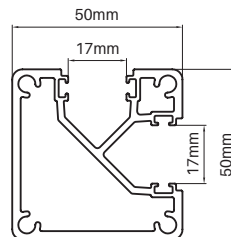
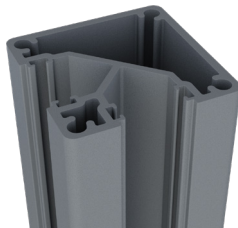
CODE: A50-5800D-2W-B
A50-5800D-2W-M
A50-5800D-2W-MN
A50-5800D-2W-W



90 DEGREE POST

- 5800mm long in alloy 6106 T6
- lxx = 186.75 x 10E3 mmE4
- lyy = 183.75 x 10E3 mmE4

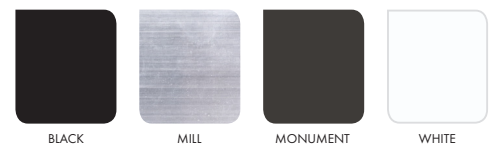
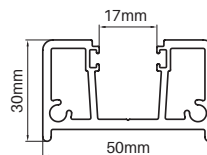
CODE: A50-5800-90-B
A50-5800-90-M
A50-5800-90-MN
A50-5800-90-W



HALF

- 5800mm long in alloy 6005 T6

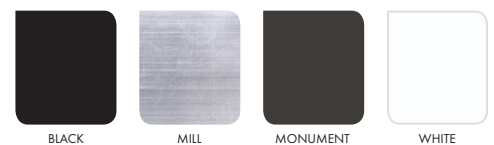
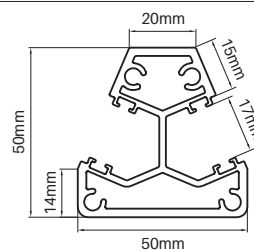
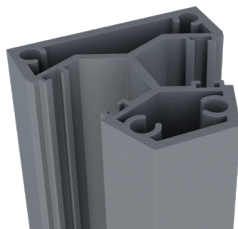
CODE: A50-5800-HALF-B
A50-5800-HALF-M
A50-5800-HALF-MN
A50-5800-HALF-W



135 DEGREE POST

- 5800mm long in alloy 6005 T6

CODE: A50-5800-135-B
A50-5800-135-M
A50-5800-135-MN
A50-5800-135-W

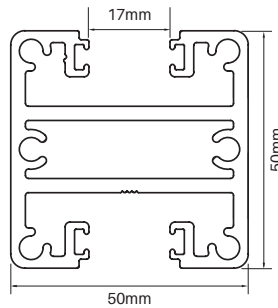
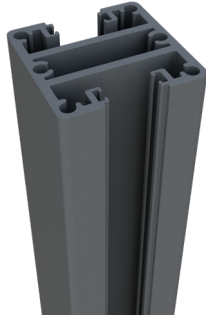


6100MM 2 WAY DOUBLE WEB – 50X50 PROFILE

DOUBLE WEBBED DELUXE 50X50MM

- 6100mm long double webbed profile in alloy 6106 T6
- Features 2 x sides with 3.1mm wall thickness for increased strength
- To turn into 1 way post, snap in infill on one side of profile
- Can be face mount installed with M12 fixing through double web cavity
- Non weld handrail bracket can also be installed in centre of cavity – contact us for more info
- $I_{xx} = 174.92 \times 10E3 \text{ mmE4}$
- $I_{yy} = 260.79 \times 10E3 \text{ mmE4}$

CODE: A5050-6100D-2W-M

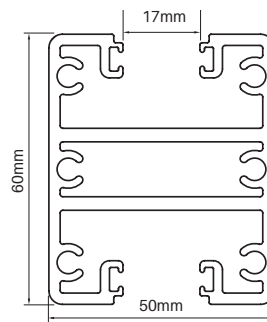
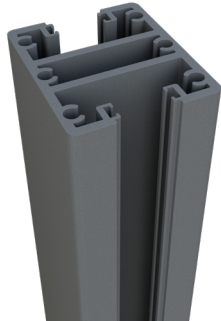


6100MM 2 WAY DOUBLE WEB – 60X50 PROFILE

DOUBLE WEBBED 60X50MM

- 6100mm long double webbed profile in alloy 6106 T6
- Rectangular 60x50mm profile provides superior strength
- To turn into 1 way post, snap in infill on one side of profile
- Can be face mount installed with M12 fixing through double web cavity
- Non weld handrail bracket can also be installed in centre of cavity – contact us for more info
- $I_{xx} = 278.74 \times 10E3 \text{ mmE4}$
- $I_{yy} = 295.58 \times 10E3 \text{ mmE4}$

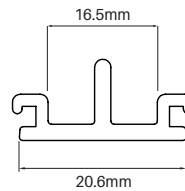
CODE: A6050-6100-2W-M



CAPTIVE INFILL

- 6100mm long captive infill
- Locks into glazing pocket so cannot 'pop' out
- Ideal if using double webbed post for face mount install

CODE: A50-6100-INFCAP-M

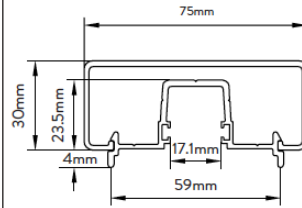


5800MM HANDRAIL

RECTANGULAR

- 5800mm 2 part handrail
- Glazing rail screw fixes to post with snap on rectangular rail

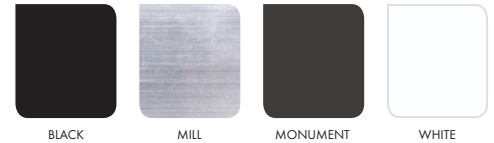
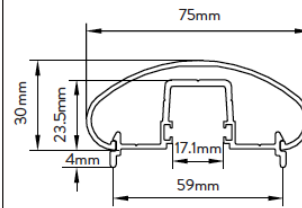
CODE: A50-5800-RHR-B
A50-5800-RHR-M
A50-5800-RHR-MN
A50-5800-RHR-W



OVAL

- 5800mm 2 part handrail
- Glazing rail screw fixes to post with snap on oval rail

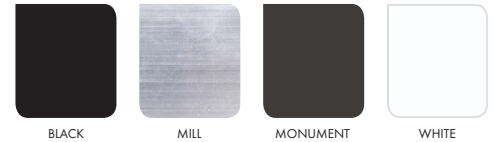
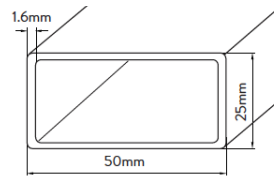
CODE: A50-5800-OHR-B
A50-5800-OHR-M
A50-5800-OHR-MN
A50-5800-OHR-W



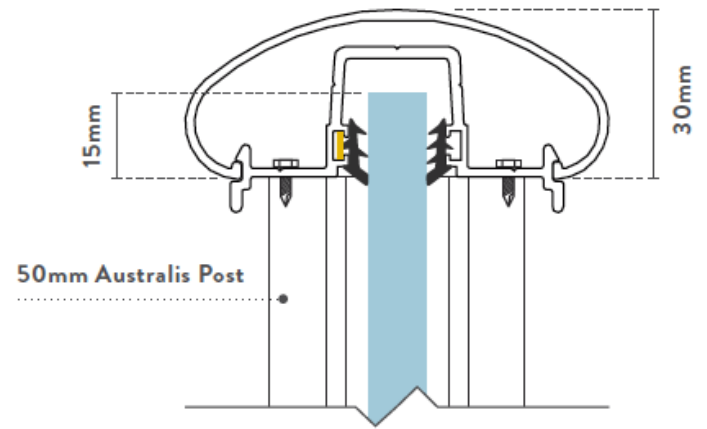
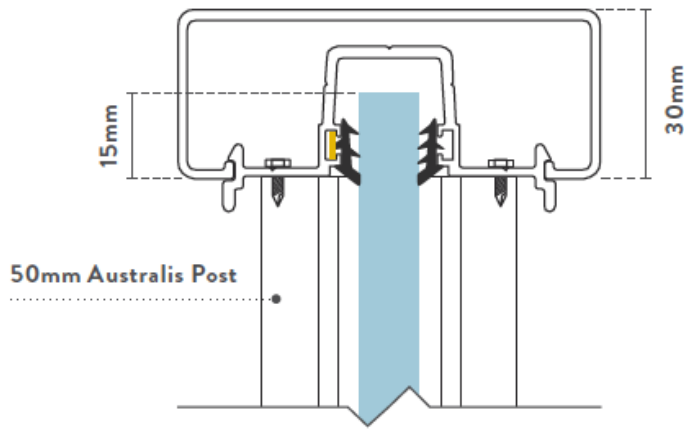
OFFSET

- 5800mm long 50x25x1.6mm profile
- Install onto offset handrail brackets

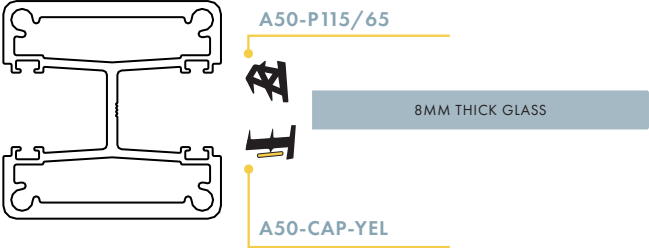
CODE: A50-OFF-5800-B
A50-OFF-5800-M
A50-OFF-5800-MN
A50-OFF-5800-W



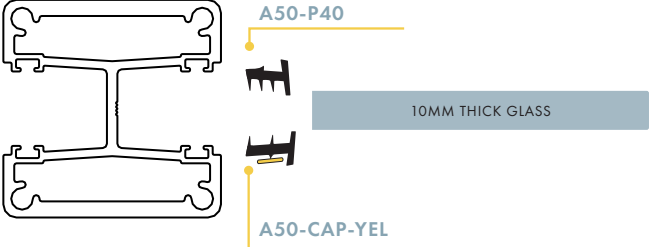
GLASS & POST HEIGHT



8MM GLASS PANELS P115/65 & YELLOW CAPTIVE



10MM GLASS PANELS P40 & YELLOW CAPTIVE



12MM GLASS PANELS P41/22 & YELLOW CAPTIVE

