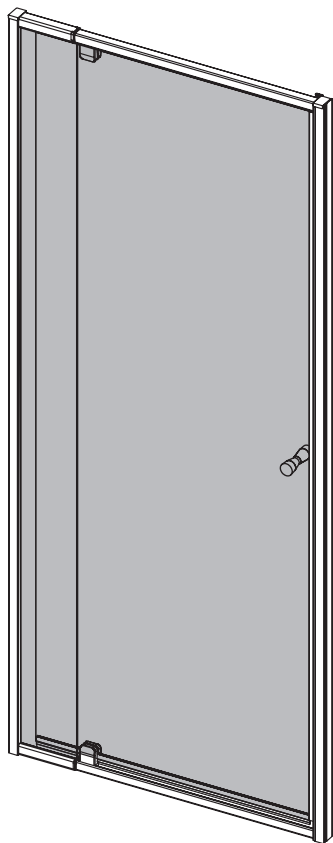


TRILOGY SERIES

INSTALLATION GUIDE

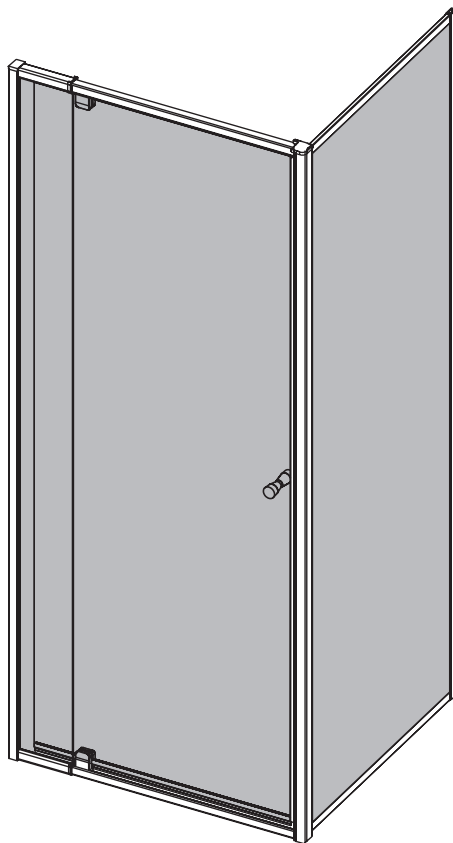


INLINE CONFIGURATION

Fully assembled

Ready to install

Pg 1 - 7



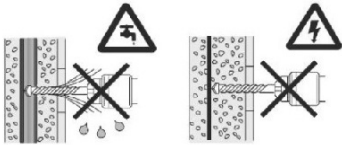
L SHAPED CONFIGURATION

Fully assembled front

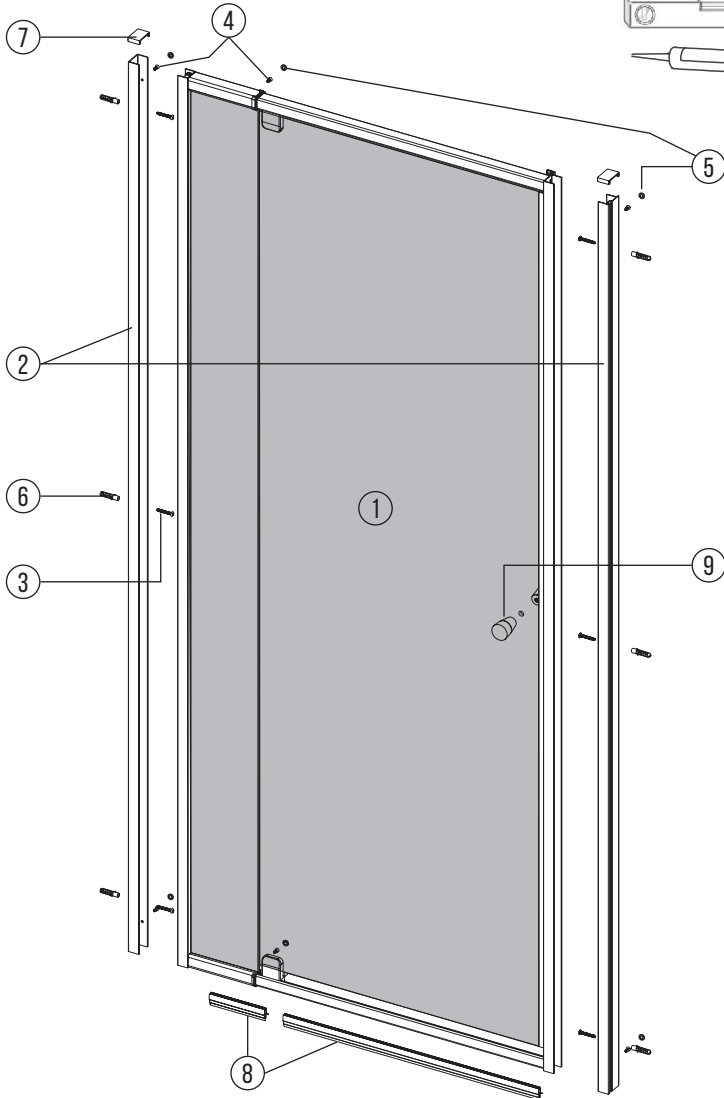
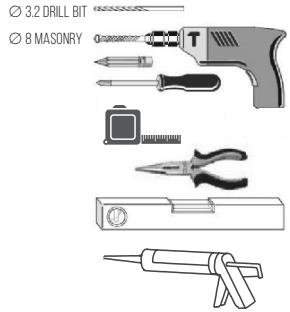
Ready to install

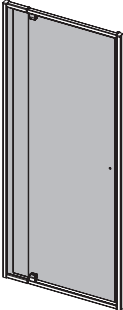
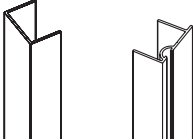




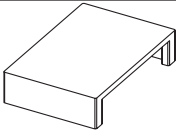
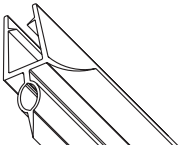

Pg 8 - 14

CAUTION:

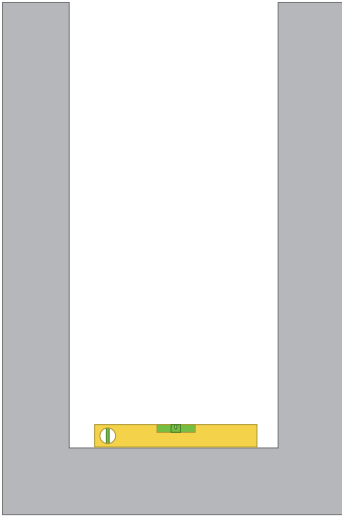


TOOLS REQUIRED:

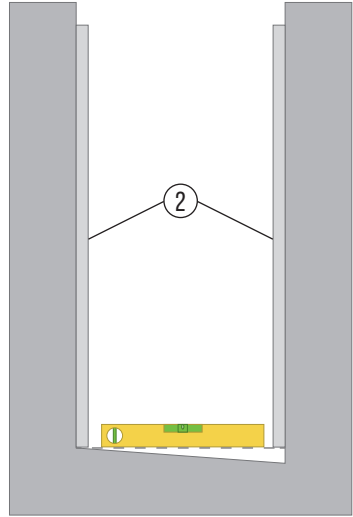


ITEM	DESCRIPTION	QTY.
1		1
2		1
3	 ST4X35	7
4	 ST4X10	7
5		7
6	 Ø8	7
7		2
8		2
9		1

1

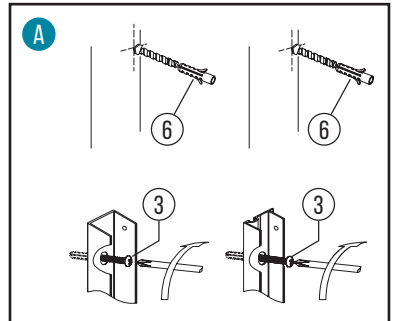
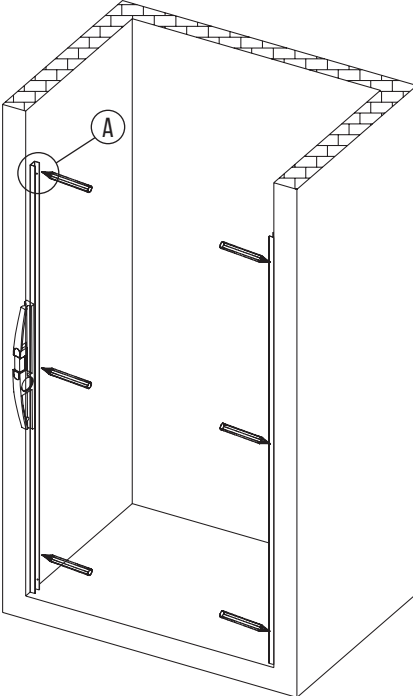


Check floor for level

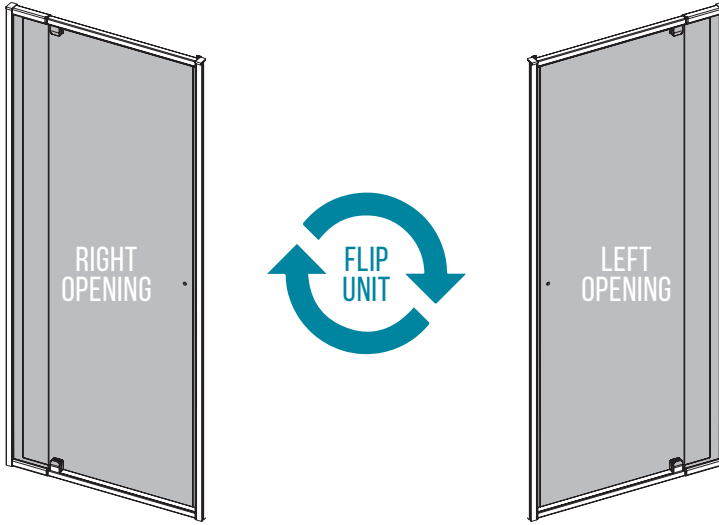


If uneven, fit wall channels level to the highest side

2

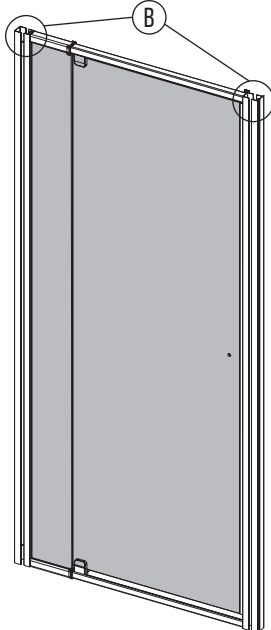


3



Simply flip the showerscreen to achieve left or right opening
Note: Door must open outward

4

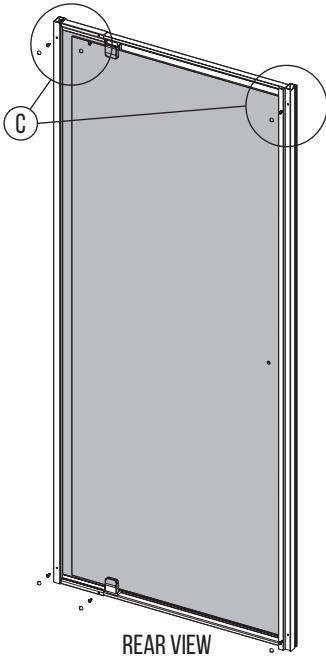


B TELESCOPIC ADJUSTMENT

Use the telescopic adjustment to fit inside the wall channels.

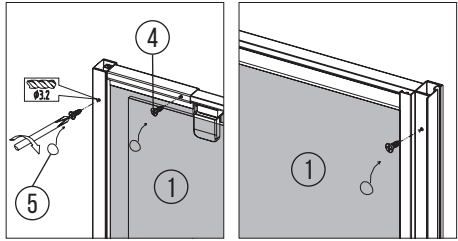
Inline 850mm series: 845mm to 900mm
Inline 900mm series: 885mm to 990mm
Inline 1200mm series: 1085mm to 1230mm

5



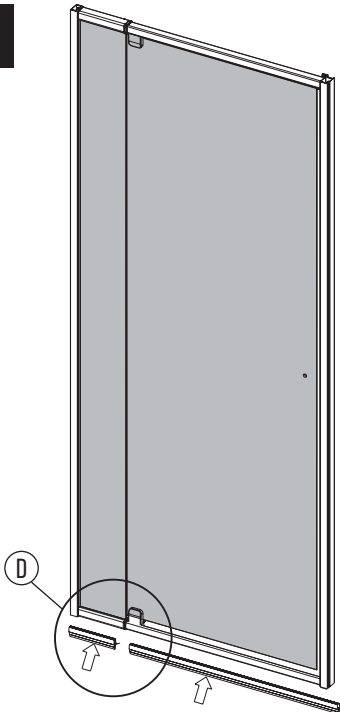
REAR VIEW

C

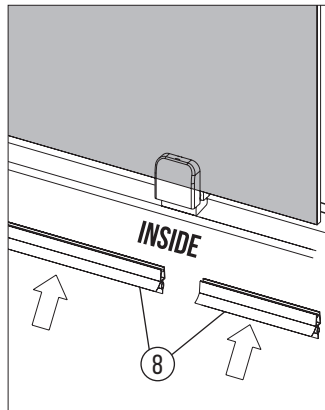


- Screw shower screen to wall channels
- Screw to lock telescopic function (Top & bottom)

6

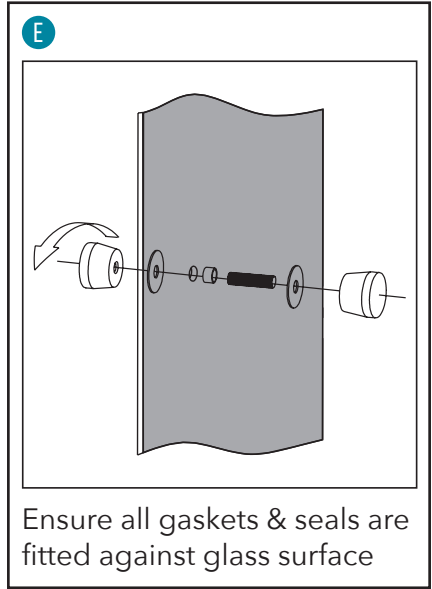
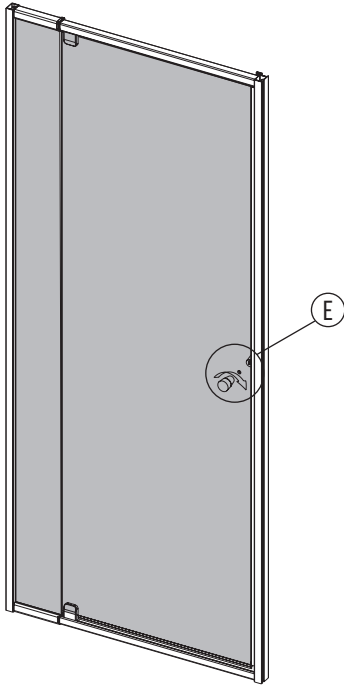


D

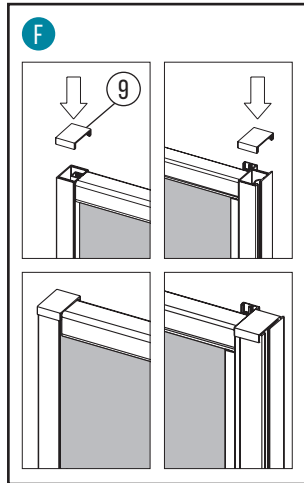
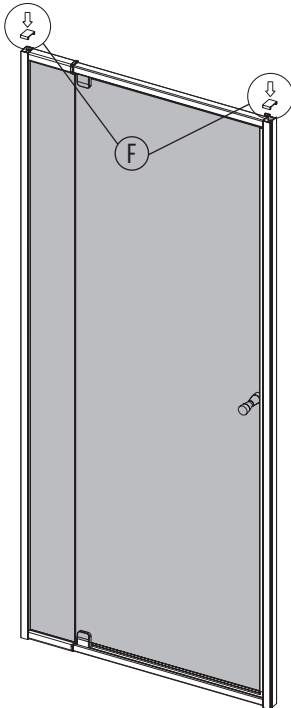


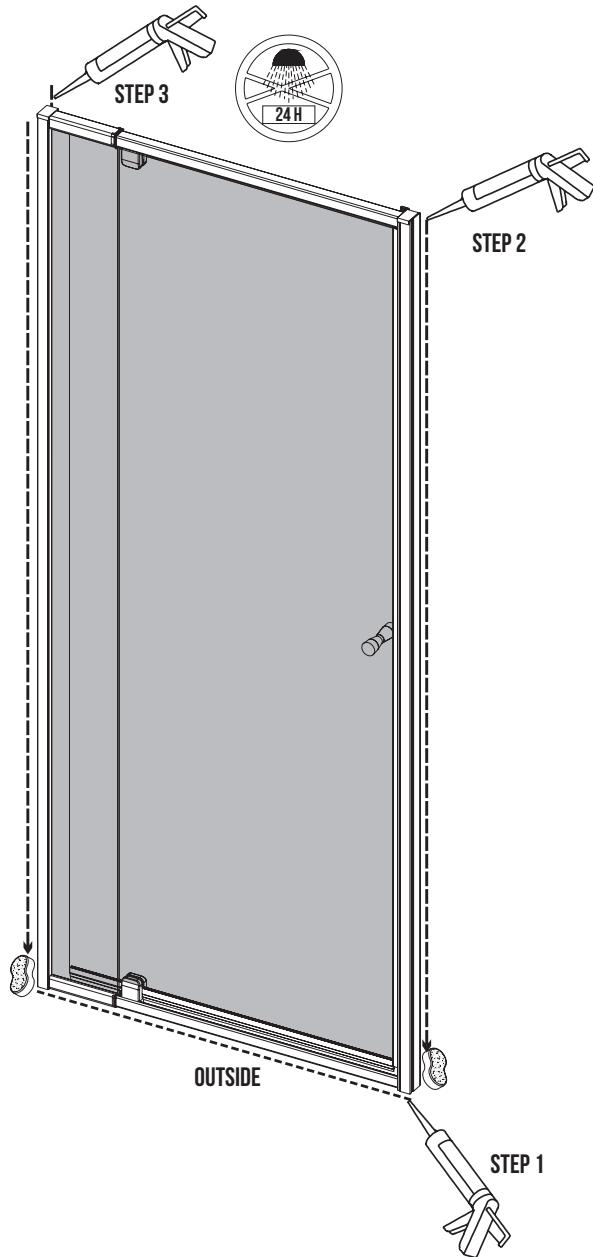
Fit seals to bottom of door ensuring angled flap faces inside

7



8

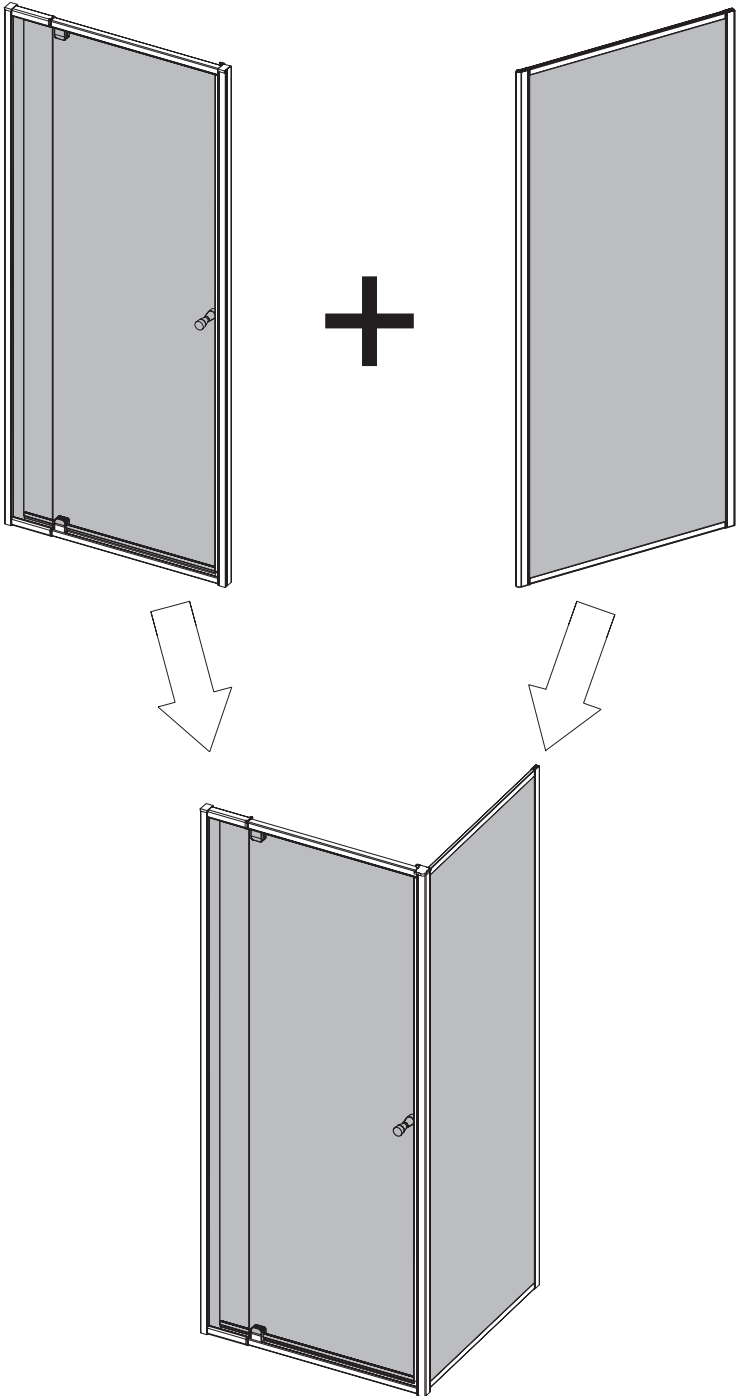




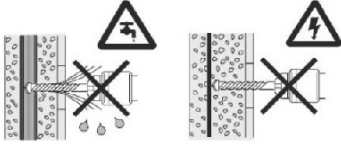
Ensure clean & dry surfaces before silicone application

Avoid usage of solvents during application

Note: Do not apply a silicone seal to the inside bottom gap between bottom sill and floor/tray



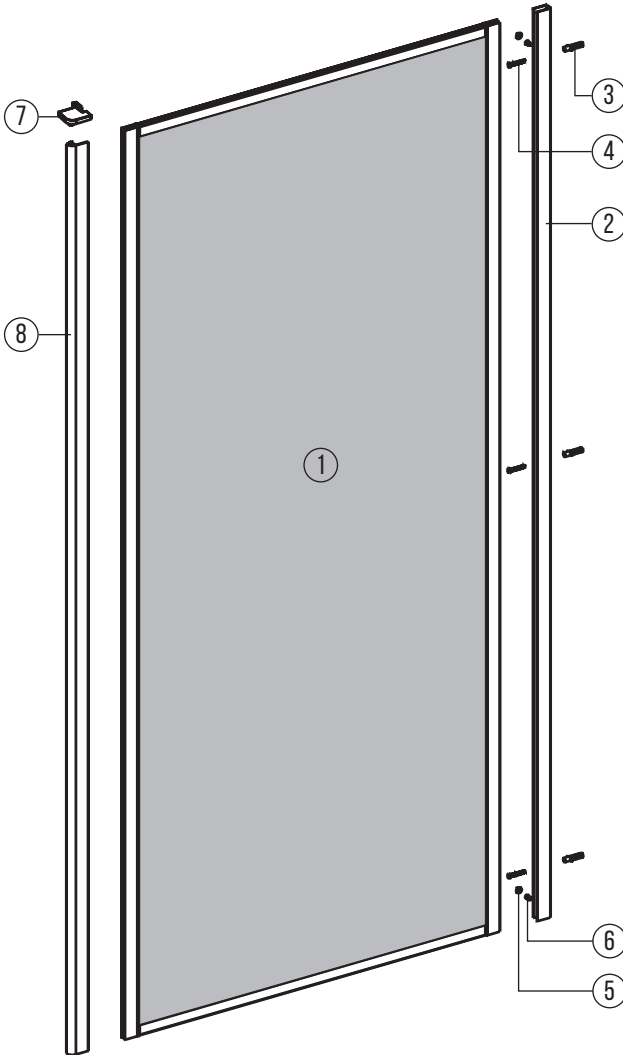
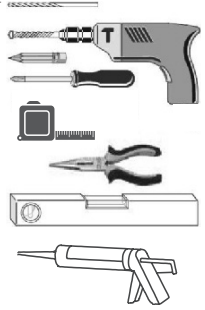
CAUTION:



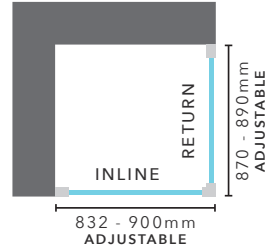
TOOLS REQUIRED:

Ø 3.2 DRILL BIT

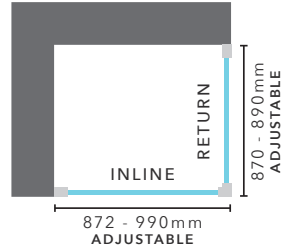
Ø 8 MASONRY



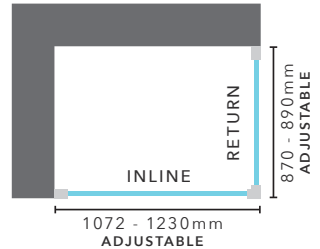
850 x 900mm


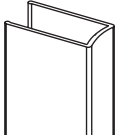
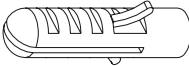



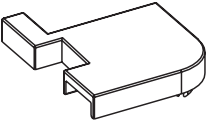
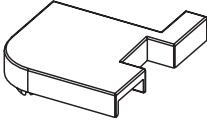
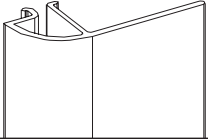


900 x 900mm

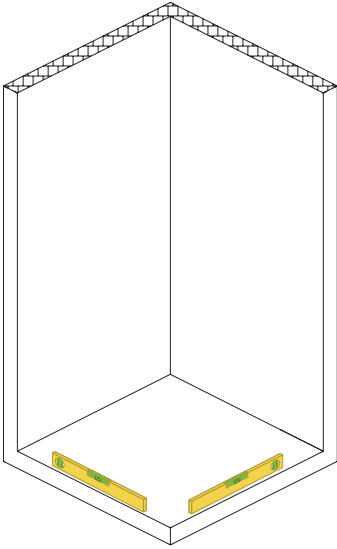


1200 x 900mm

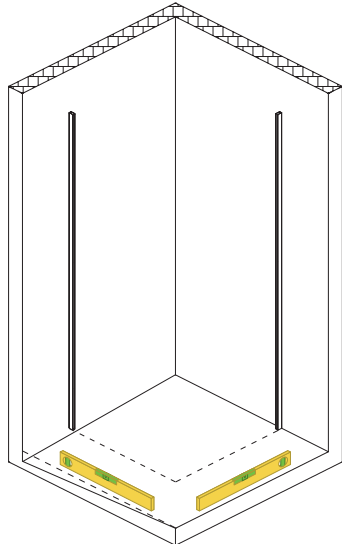


ITEM	DESCRIPTION	QTY.
1		1
2		1
3	 Ø8	4
4	 + ST4X35	4
5		5
6	 + ST4X10	7
7.1		1
7.2		1
8		1

1

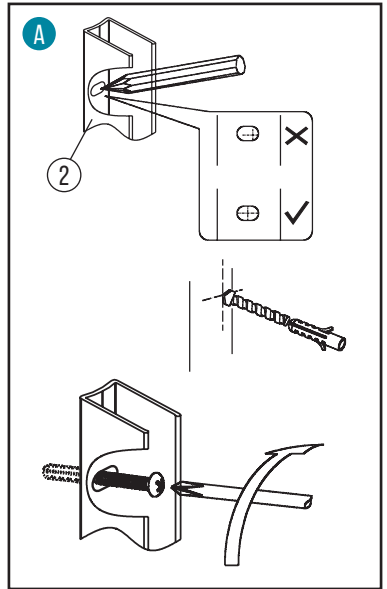
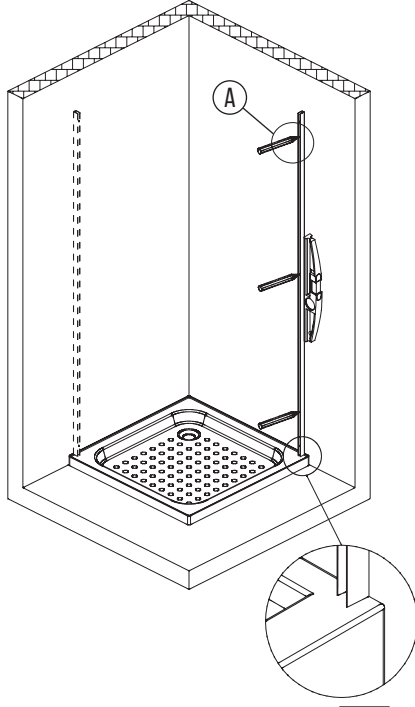


Check floor for level

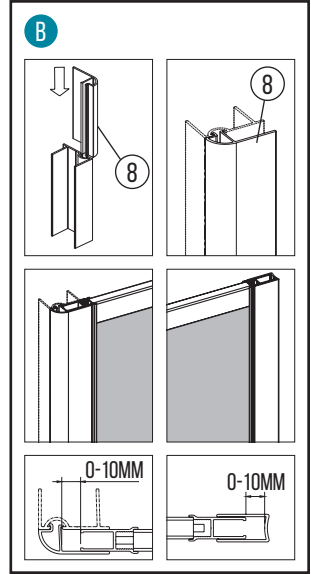
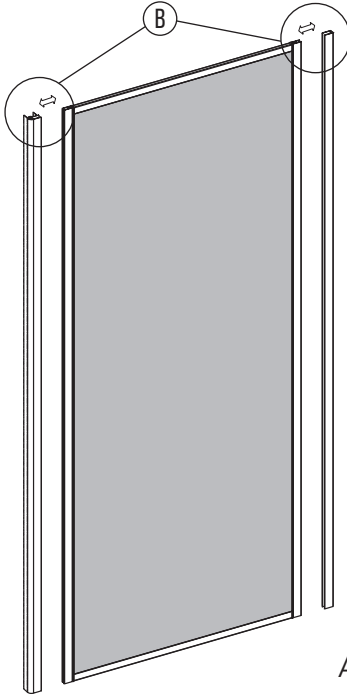


If uneven, fit wall channels level to the highest side

2

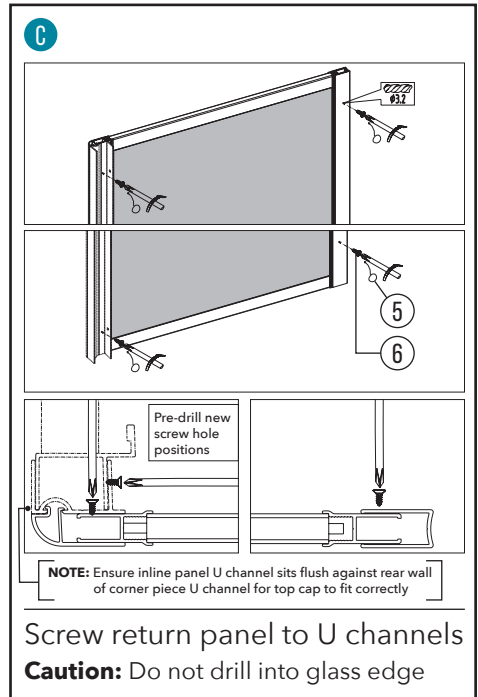
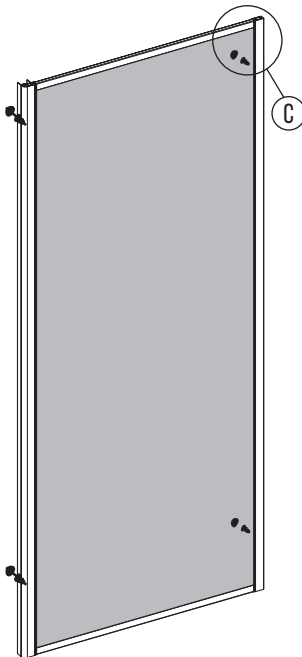


3

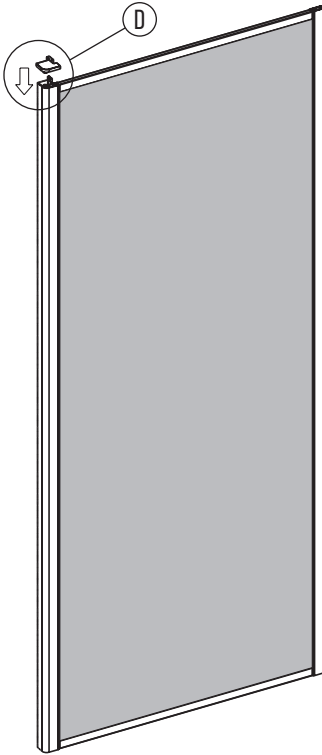


900mm return panel
Adjustable from 870mm to 890mm

4



5



D

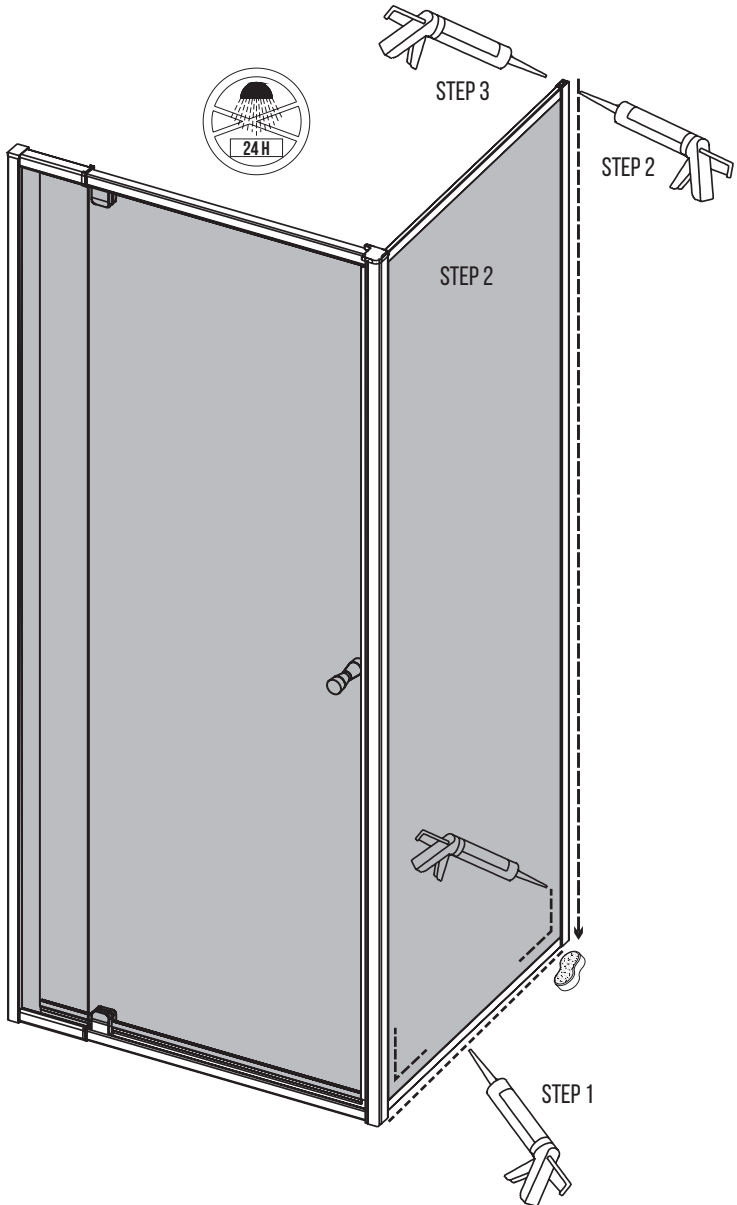
7.2

7.1

8

Choose appropriate corner top cap (discard unused cap)

The diagram shows two cross-sectional views of a window frame corner. The left view shows a cap labeled '7.2' being placed on a frame profile labeled '8'. The right view shows a cap labeled '7.1' being placed on a different frame profile. Both views include a downward-pointing arrow indicating the installation direction.



Ensure clean & dry surfaces before silicone application

Avoid usage of solvents during application

Note: Do not apply a silicone seal to the inside bottom gap between bottom rail and floor tray